

SPORT CAGES - BUMPERS - SKID PLATES - SLIDERS

ROCKHARD

PREMIUM - PATENTED - PROVEN

4X4

START YOUR

ADVENTURE

100% MADE IN USA UPGRADES FOR:

1987 - CURRENT JEEP WRANGLER YJ/TJ/LJ/JK

1955 - 1986 JEEP CJ5/CJ7/CJ8

1984 - 2001 JEEP CHEROKEE XJ

1993 - 1998 JEEP GRAND CHEROKEE ZJ

1999 - 2004 JEEP GRAND CHEROKEE WJ



DIGITAL CATALOG PRO TIP:

RIGHT CLICK ON THE LINK YOU WANT TO FOLLOW AND SELECT "OPEN IN NEW TAB".

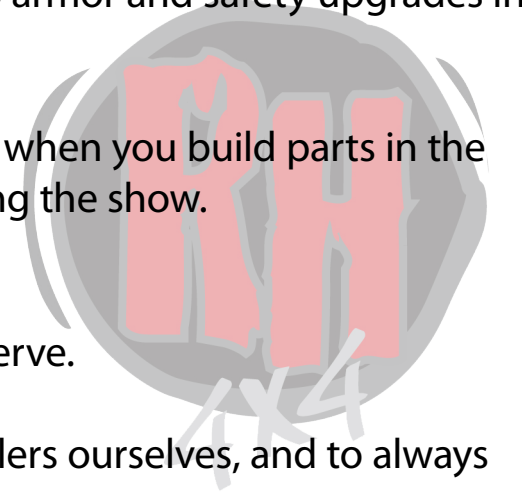
THIS WILL SAVE YOUR PLACE IN THE CATALOG!

FALL 2015/2016 MASTER ONLINE CATALOG

TOLL FREE (844) 762-5427

CLICKABLE TABLE OF CONTENTS

MADE IN USA. NO EXCUSES.



Every single ROCK HARD 4x4 product we produce must follow the legacy started in 1991, when we set out to build a premium line of Jeep armor and safety upgrades in the USA. Made in America with pride.

100% MADE IN USA.

There is a certain level of quality you can only achieve when you build parts in the United States, under your own roof, with family running the show.

No compromise, no excuses.

DRIVEN BY A PROMISE.

We promise to give you the customer service you deserve.

We promise to promptly correct any error we make.

We promise to remember our roots, that we are wheelers ourselves, and to always love what we do.

Simply put, we promise to care.

NEW - "HOW TO" VIDEOS!
YOUTUBE.COM/ROCKHARD4X4

Click play and learn how to install your next ROCK HARD 4x4 upgrade! We spent the first half of 2015 filming easy to follow, hi-definition videos with step by step instructions aimed to help you "get er' done" and experience ROCK HARD 4x4 quality!



MOBILE DEVICE READY!



rockhard4x4.com #rockhard4x4

JK JEEP WRANGLER (2007 - CURRENT)

- NEW PRODUCTS3...(CLICK HERE)
- LIGHT MOUNTS6...(CLICK HERE)
- SPORT CAGES7...(CLICK HERE)
- FRONT BUMPERS9...(CLICK HERE)
- REAR BUMPERS13...(CLICK HERE)
- SKID PLATES15...(CLICK HERE)
- SLIDERS16...(CLICK HERE)

LJ JEEP WRANGLER (2003 - 2006)

- SPORT CAGES17...(CLICK HERE)
- FRONT BUMPERS19...(CLICK HERE)
- REAR BUMPERS21...(CLICK HERE)
- SLIDERS - SKID PLATES23...(CLICK HERE)

TJ JEEP WRANGLER (1997 - 2006)

- SPORT CAGES17...(CLICK HERE)
- FRONT BUMPERS19...(CLICK HERE)
- REAR BUMPERS21...(CLICK HERE)
- SLIDERS - SKID PLATES23...(CLICK HERE)

YJ JEEP WRANGLER (1987 - 1995)

- SPORT CAGES25...(CLICK HERE)
- FRONT BUMPERS19...(CLICK HERE)
- REAR BUMPERS21...(CLICK HERE)
- SLIDERS - SKID PLATES23...(CLICK HERE)

CJ8 JEEP SCRAMBLER (1981 - 1986)

- SPORT CAGES24...(CLICK HERE)
- FRONT BUMPERS19...(CLICK HERE)
- REAR BUMPERS21...(CLICK HERE)
- SLIDERS - SKID PLATES23...(CLICK HERE)

CJ7 JEEP (1976 - 1986)

- SPORT CAGES27...(CLICK HERE)
- FRONT BUMPERS19...(CLICK HERE)
- REAR BUMPERS21...(CLICK HERE)
- SLIDERS - SKID PLATES23...(CLICK HERE)

CJ5 JEEP (1955 - 1983)

- SPORT CAGES29...(CLICK HERE)
- FRONT BUMPERS19...(CLICK HERE)
- REAR BUMPER21...(CLICK HERE)

XJ JEEP CHEROKEE (1984 - 2001)

- SPORT CAGES31...(CLICK HERE)
- FRONT BUMPER33...(CLICK HERE)
- REAR BUMPERS35...(CLICK HERE)
- SLIDERS34...(CLICK HERE)
- SKID PLATES36...(CLICK HERE)

ZJ JEEP GRAND CHEROKEE (1993 - 1998)

- SPORT CAGES37...(CLICK HERE)
- FRONT BUMPER39...(CLICK HERE)
- REAR BUMPERS41...(CLICK HERE)
- SLIDERS - SKID PLATES40...(CLICK HERE)

WJ JEEP GRAND CHEROKEE (1999 - 2004)

- SPORT CAGES38...(CLICK HERE)
- FRONT BUMPER39...(CLICK HERE)
- REAR BUMPERS41...(CLICK HERE)
- SLIDERS40...(CLICK HERE)

COMANCHE JEEP (1986 - 1992)

- SPORT CAGES31...(CLICK HERE)
- FRONT BUMPER33...(CLICK HERE)

- FABRICATION COLLARS43...(CLICK HERE)
- NEW PRODUCTS3...(CLICK HERE)
- POWDER COAT FINISH1...(CLICK HERE)
- SHOOTING TARGETS44...(CLICK HERE)
- SPORT CAGE PADDING2...(CLICK HERE)
- UNIVERSAL PARTS5...(CLICK HERE)

"I THINK WE'RE ON TO SOMETHING HERE DAD.."

James Barth to father Lew, circa 1991 when a row of Jeeps at Tierra Del Sol each had one of their 4x4 parts installed - proving wheelers of all skill levels had embraced their 100% family owned company and American made product.

ROCK HARD 4x4 reserves the right to change any catalog content, including pricing, at any time without notice. Any product return is subject to a 15% restocking fee. Some photos included in this catalog, as well on the official ROCK HARD 4x4 website, or any dealer website or search result, may vary from actual product received. Some photos may included options not included in actual product. Product specifications may change without notice. All products are intended for off road use only - check with local or state laws prior to use. Please use products responsibly as off roading is inherently dangerous. Buyer assumes all risk. ROCK HARD 4x4 accepts all major credit cards.

(844) 762-5427



WWW.ROCKHARD4X4.COM

WWW.ROCKHARD4X4.COM



844-762-5427

POWDER COAT FINISH

DURABLE, WEATHER RESISTANT, AND GREAT LOOKING!

Quality not just in production - but finishing as well! Learn all about what our powder coat looks like - what it feels like - and how to care for it so it lasts for years of trail fun!

We like to describe it as a semi-smooth, satin finish. It feels like an egg shell which makes it scratch resistant but isn't so rough that its impossible to clean dirt and mud off. It isn't super glossy but does have shine to it so it's gorgeous after a wash. Rough (hammered) finishes have large pores that make it nearly impossible to clean, and mirror finishes scratch with even light contact. Often hammered finishes are used to mask poor welds or stress cracks. Our finish is sprayed in house so we know all the nooks are coated and the part was baked and cured properly. Years ago we outsourced and had no control over quality. Nowadays we have a finish we are proud of!

To care for it - put that heavy duty dishwasher detergent away. That has properties that are damaging to even clear coat on your paint, so it certainly isn't suitable for powder coat. Mild soaps and water are fine. Remove salt and adverse weather road sprays as quickly as possible. Like all things 4x4 - get it dirty and enjoy it!



SPORT CAGE PADDING KITS

PRECISION CUT FOAM & WRAP + CUSTOM SIZES AVAILABLE!

CUT SPECIFICALLY FOR LENGTH OF FOAM TUBE. FOAM IS SPLIT FOR EASY INSTALL.

HEAVY DUTY INDUSTRIAL GRADE VELCRO UV/TEAR/CUT RESISTANT VINYL WRAP IMPACT ABSORBING FOAM INCLUDED



JEEP WRANGLER JK 2/4DR 2007 - CURRENT

- FRONT OVERHEAD T-SECTION (07-16 2/4DR)
#RH-1030-TP - \$99.95
- REAR OVERHEAD CENTER BARS (07-16 4DR)
#RH-1030-RCP4 - \$49.95
- REAR OVERHEAD CENTER BARS (07-16 2DR)
#RH-1030-RCP2 - \$49.95
- STRAIGHT ACROSS REAR BAR (07-16 2DR) +
REAR OVERHEAD CENTER BARS
#RH-1030-RTP2 - \$99.95
- FRONT SEAT HARNESS BAR (07-16 2/4DR)
#RH-1030-SFHP - \$49.95
- REAR SEAT HARNESS BAR (07-16 2/4DR)
#RH-1030-RHP - \$49.95

JEEP WRANGLER TJ/LJ 1997 - 2006

- FRONT OVERHEAD T-SECTION (97-06 TJ/LJ)
#RH-1001-TP - \$99.95
- REAR OVERHEAD ANGLE BARS (97-06 TJ/LJ)
#RH-1001-AP - \$49.95
- DASH PAD (97-06 TJ/LJ)
#RH-1001-DP - \$49.95
- STRAIGHT ACROSS REAR BAR (97-06 TJ/LJ)
#RH-1001-RP - \$49.95

JEEP CJ7 1976 - 1986

- FRONT OVERHEAD T-SECTION (76-86)
#RH-1002-TP - \$149.95
- REAR OVERHEAD ANGLE BARS (76-86)
#RH-1002-AP - \$49.95
- STRAIGHT ACROSS REAR BAR (76-86)
#RH-1002-RP - \$49.95

JEEP WRANGLER YJ 1987 - 1995

- FRONT OVERHEAD T-SECTION (87-95)
#RH-1002-TP - \$149.95
- REAR OVERHEAD ANGLE BARS (87-95)
#RH-1002-AP - \$49.95
- STRAIGHT ACROSS REAR BAR (87-95)
#RH-1002-RP - \$49.95

JEEP CJ5 1955 - 1983

- FRONT OVERHEAD T-SECTION (55-83)
#RH-1002-TP - \$149.95
- STRAIGHT ACROSS REAR BAR (55-83)
#RH-1002-RP - \$49.95

PADDING KITS AVAILABLE FOR ALL OUR BARS - PLUS CUSTOM SIZES AVAILABLE!



NEW RH4X4 PRODUCTS

THE LATEST AND GREATEST MADE IN AMERICA PRODUCTS!



MADE IN USA - RH4X4 EXCLUSIVE!

EACH INCLUDES 1 FIXED MOLLE CARGO POUCH WITH HEAVY DUTY ZIPPERS. PRECISION FIT WITH INDUSTRIAL GRADE VELCRO FASTENS TO RH4X4 CAGE TUBING. STORE FLASHLIGHTS, TOOLS, GLOVES, AND MORE! WORKS WITH FACTORY HARD AND SOFT TOP PLUS OUR MOLLE CAGE CARGO WRAPS ARE COMPATIBLE WITH POPULAR SHADES LIKE SPIDERWEBSHADE AND BARTACT!

MOLLE CAGE CARGO WRAP

2007 - 2016 2/4DR FRONT
*REQUIRES RH-1030 OR RH-1030-1L

#RH-1401 \$99.95

2007 - 2016 4DR REAR
*REQUIRES RH-1030-A

#RH-1402 \$99.95

2007 - 2016 2DR REAR
*REQUIRES RH-1030-C

#RH-1403 \$99.95

1997 - 2006 TJ/LJ FRONT
*REQUIRES RH-1001

#RH-1404 \$99.95

1987 - 1995 YJ FRONT
*REQUIRES RH-1002

#RH-1405 \$99.95



TRAIL STEP - JEEP JK

2007 - 2016 2/4DR FRONT

#RH-6015 COMING SOON

EASILY SLIPS INTO DOOR SILL
CONVENIENT STEP FOR LIFTED JEEPS
ZERO DRILLING/CUTTING REQUIRED
POWDER COAT INCLUDED

TRAIL STEP - JEEP TJ/LJ

1997 - 2006

#RH-6016 \$59.95

EASILY SLIPS INTO DOOR SILL
CONVENIENT STEP FOR LIFTED JEEPS
ZERO DRILLING/CUTTING REQUIRED
POWDER COAT INCLUDED

NEW RH4X4 PRODUCTS

THE LATEST AND GREATEST MADE IN AMERICA PRODUCTS!



UNIVERSAL FIT NON-SLIP GRAB HANDLE

1955 - 2016 ALL MODELS

#RH-1025 \$24.95 EACH

EXTREMELY HEAVY DUTY GRAB HANDLE



JK MOPAR LICENSE PLATE DELETE PLUG

2007 - 2016 2/4DR

#55397112AA \$29.95

USED TO COVER HOLES LEFT WHEN USING
LICENSE PLATE RELOCATION KITS



JK STEERING STABILIZER / TIE ROD CLAMP

OEM TIE ROD - 1.375" OD TIE ROD

*DESIGNED FOR AFTERMARKET STABILIZER WITH 1/2" PIN

#RH-9000 \$49.95

POWDER COAT INCLUDED



JK TAILGATE VENT PLATE

2007 - 2016 2/4DR

*REQUIRES REMOVING OEM TIRE CARRIER

#RH-5016 \$49.95

COMPATIBLE WITH BOTH SQUARE AND RECTANGULAR JK TAILGATE VENT SHAPES
STAINLESS STEEL BACKING PLATE
ZERO DRILLING/CUTTING REQUIRED
POWDER COAT INCLUDED



OVERSIZED TIE ROD - 1-5/8" OD TIE ROD
(CURRIE, ROCK KRAWLER, SYNERGY)

*DESIGNED FOR AFTERMARKET STABILIZER WITH 1/2" PIN

#RH-9001 \$49.95

POWDER COAT INCLUDED

UNIVERSAL RH4X4 PRODUCTS

DESIGNED TO WORK WITH WHATEVER RIG YOU RUN!



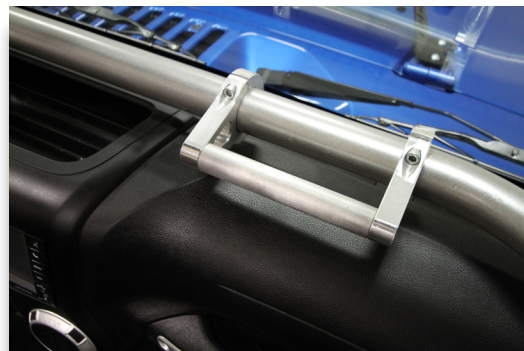
3RD BRAKE LIGHT
#RH-2002-T \$14.95
 FITS 2-1/2" BORE HOLES
 MOUNTS TO TIRE CARRIER
 SOME WIRING REQUIRED
 CONNECTORS INCLUDED



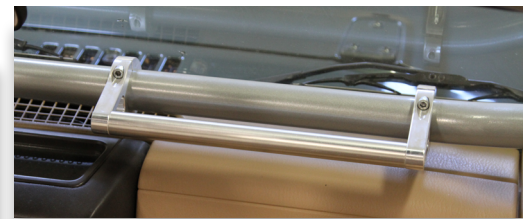
NON-SLIP GRAB HANDLE
#RH-1025 \$24.95
 VELCRO - UNIVERSAL
 SOLD INDIVIDUALLY



CLIP ON FRONT PLATE KIT
#RH-4006-F \$29.95
 FITS ALL POPULAR
 WINCH ROLLER FAIRLEADS
 CABLE PREVENTS LOSS



ALUMINUM GRAB HANDLE
***SHIPS BARE ALUMINUM - UNCOATED**
6" #RH-1020-S \$79.95
12" #RH-1020-L \$79.95
 FITS 1-3/4" OD TUBING



ALUMINUM GRAB HANDLE
***SHIPS BARE ALUMINUM - UNCOATED**
FITS ALL 1-3/4" OD TUBING!
6" #RH-1020-S \$79.95
12" #RH-1020-L \$79.95



RECOVERY D-RING
#RH-4003 \$14.95
 9,500 LB 3/4" CLEVIS
 SOLD INDIVIDUALLY



5-WAY ACCESSORY MOUNT
***SHIPS BARE ALUMINUM - UNCOATED**
#RH-1021 \$39.95
 FITS 1-3/4" OD TUBING



**LICENSE PLATE MOUNT W/
 LED BRAKE / TAG LIGHT**
#RH-4006 - LED PLATE \$99.95
 AND 3RD BRAKE LIGHT
 WITH RELOCATION KIT
 INCLUDES #RH-4007
 POWDER COAT INCLUDED



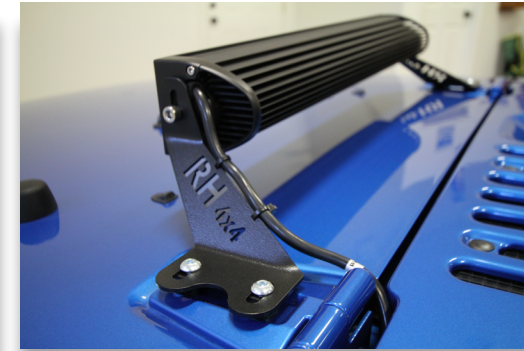
LICENSE PLATE MOUNT
#RH-4007 \$49.95
 LICENSE PLATE MOUNT ONLY
 POWDER COAT INCLUDED

JK LIGHT MOUNTS

JEEP WRANGLER JK 2/4DR UNLIMITED (2007 - CURRENT)



THE EASIST AND MOST AFFORDABLE WAY TO ADD BIG LED BARS TO YOUR JK! OUR HOOD MOUNTS ARRIVE POWDER COATED AND READY TO INSTALL. EXCLUSIVE RUBBER FEET PREVENT SCRATCHING AND THE STAINLESS BOLTS PREVENT CORROSION. USE THE LASER CUT SLOTS TO SECURE YOUR ZIP TIES FOR A CLEAN LOOKING INSTALLATION!



JK HOOD LIGHT MOUNTS
***LIGHTS NOT INCLUDED**
#RH-6051 \$74.95
 FITS ALL POPULAR SIDE
 MOUNT 20" LED LIGHTS
 HARDWARE INCLUDED
 POWDER COAT INCLUDED
 NO DRILLING OR CUTTING
 SOLD IN PAIRS



ADD OFF ROAD LIGHTS IN UNDER 5 MINUTES! OUR WINDSHIELD (A-PILLAR) LIGHT MOUNTS REQUIRE NO DRILLING OR CUTTING AND USE YOUR OEM HARDWARE SO YOU KNOW THEY'LL FIT SNUGLY AND SECURELY. THEY ARRIVE POWDER COATED AND USE COMMON HAND TOOLS TO INSTALL IN MINUTES. FITS ALL POPULAR PODS AND UP TO 6" HID LIGHTS! PRO TIP: ANGLE YOUR LIGHTS SLIGHTLY OUTWARD TO HELP ON TURNS!



JK WINDSHIELD MOUNTS
***LIGHTS NOT INCLUDED**
#RH-6050 \$29.95
 FITS ALL POPULAR STUD
 MOUNT LIGHTS
 POWDER COAT INCLUDED
 NO DRILLING OR CUTTING
 SOLD IN PAIRS



Authorized Distributor
 Contact us to add any
 KC HiLiTES light to your order.



WINCH FAIRLEAD LIGHT MOUNT
***LIGHTS NOT INCLUDED**
#RH-6065 \$29.95
 FITS ALL ROLLER AND HAWSE FAIRLEADS
 POWDER COAT INCLUDED
 NO DRILLING OR CUTTING
 OPEN BOTTOM MEANS YOU DO NOT
 HAVE TO REMOVE CABLE OR HOOK
 TO INSTALL! SIMPLY REMOVE FAIRLEAD,
 SLIDE BETWEEN BUMPER AND FAIRLEAD
 AND REINSTALL HARDWARE!

JK SPORT CAGE

**JEEP WRANGLER JK 2/4DR UNLIMITED (2007 - 2016)
PREMIUM - PATENTED - PROVEN "THE ORIGINAL BOLT IN CAGE"
REQUIRES NO WELDING - PATENTED STEEL LOCKING COLLARS**



THE ULTIMATE PREMIUM CAGE!

JK ULTIMATE SPORT CAGE ***SHIPS BARE STEEL - UNCOATED**

2007 - 2010 2/4DR MAIN SPORT CAGE
#RH-1030 \$649.95

2011 - 2016 2/4DR MAIN SPORT CAGE
#RH-1030-1L \$649.95

MAIN SPORT CAGE INCLUDES:
OVERHEAD T-SECTION
LEFT + RIGHT UPRIGHTS
LOWER WINDSHIELD BAR
WELDED GRAB HANDLES
GALVANIZED HARDWARE

FACTORY HARD/SOFT TOP
COMPATIBLE + WORKS WITH
FULL AND HALF DOORS!



NO WELD INSTALL

DRIVER + PASSENGER
WELDED GRAB
HANDLES INCLUDED



T-SECTION INCLUDES 14
GAUGE PLATE FOR CB +
ACCESSORY MOUNTING



CAGE FULLY COMPATIBLE
WITH SPEAKERS AND
AIR CONDITIONING VENTS



HANDLES INCLUDED

LEFT AND RIGHT DASH BARS CONNECT
TO WINDSHIELD FRAME FOR EXTRA
STRENGTH

CLEAN LOOKING DASH BAR
DOES NOT BLOCK VIEW

CAGE CONNECTIONS USE
PATENTED LOCKING COLLARS

UPPER + LOWER WINDSHIELD
BARS STRENGTHEN CABIN

OPTIONAL GPS/
CELL MOUNTS



1-3/4" TUBING



1/2" THICK COLLARS



**#RH-1021
\$39.95**

SPORT CAGE UPGRADES

JEEP JK 2/4DR (2007 - 2016) / PADDING KITS AVAILABLE



REAR OVERHEAD CENTER BARS (2007 - 2016) ***SHIPS BARE STEEL - UNCOATED**

JK 4DR/UNLIMITED

#RH-1030-A \$169.95

JK 2DR *RH-1030-B REQUIRED

#RH-1030-C \$169.95

CONNECTS SPEAKER BAR TO OEM REAR CAGE
14GA. STEEL ACCESSORY MOUNTING PLATE INCLUDED
MAIN SPORT CAGE NOT REQUIRED
SOME DRILLING MAY BE REQUIRED



STRAIGHT ACROSS REAR BAR 2DR (2007 - 2016) ***SHIPS BARE STEEL - UNCOATED**

JK 2DR ONLY

#RH-1030-B \$129.95

CONNECTS DRIVER + PASS SIDE OEM REAR CAGE BARS
OEM HARD/SOFT TOP COMPATIBLE
MAIN SPORT CAGE NOT REQUIRED
100% BOLT IN INSTALL
USES PATENTED LOCKING COLLARS
FITS JK 2DR ONLY

*RH-1030-C SHOWN IN PHOTO, SOLD SEPARATELY



FRONT SEAT HARNESS BAR (2007 - 2016) ***SHIPS BARE STEEL - UNCOATED**

JK 4DR/UNLIMITED *PADDING KIT SHOWN SOLD SEPARATELY.

#RH-1030-SFH4 \$149.95

JK 2DR

#RH-1030-SFH2 \$149.95



REAR SEAT HARNESS BAR (2007 - 2016) ***SHIPS BARE STEEL - UNCOATED**

JK 4DR/UNLIMITED

#RH-1030-RH4 \$149.95

JK 2DR

#RH-1030-RH2 \$149.95



NEW PRODUCT!

3RD ROW / ACCESSORY MOUNT 4DR (2007 - 2016) ***SHIPS BARE STEEL - UNCOATED**

JK 4DR/UNLIMITED ONLY

#RH-1032 \$279.95

OEM HARD/SOFT TOP COMPATIBLE
USES PATENTED LOCKING COLLARS
(SPRING ASSIST SOFT TOP NOT COMPATIBLE)
FITS JK 4DR UNLIMITED ONLY
MAIN SPORT CAGE NOT REQUIRED
ALL HARDWARE INCLUDED



JK FULL WIDTH BUMPERS

JEEP JK 2/4DR (2007 - 2016)

**1/4" THICK STEEL OR ALUMINUM - FITS FACTORY FOG LIGHTS* - LIGHT TABS
TUBULAR WINCH GUARD - 1" THICK RECOVERY TABS - POWDER COAT INCLUDED
HARDWARE INCLUDED - SWAY BAR SKID PLATE INTEGRATED - NO DRILLING REQUIRED!
WINCH PLATE INCLUDED IN ALL MODELS - ALL RH4X4 JK BUMPERS ARE FLAT TOWABLE!**

*DEM PLASTIC BUMPER FOGS ONLY

**LOWERED WINCH PLATE
TOW BAR BRACKETS AVAILABLE**



**FITS ALL POPULAR WINCHES INCLUDING
ZEON + POWERPLANT WINCHES
30% MORE GRILLE AIRFLOW!**

STANDARD WINCH PLATE



ADD A WINCH LATER!

JK 2012 - 2016 VACUUM PUMP RELOCATION KIT

#RH-5011 \$29.95
REQ'D ON LOWERED WINCH BUMPERS



BEST SELLER!

FULL WIDTH LOWERED WINCH

STEEL
#RH-5005 \$899.95
ALUMINUM (37 LBS!)
#RH-5045 \$1,195.95



FAIRLEAD MOUNT INCLUDED

FULL WIDTH STANDARD

STEEL
#RH-5006 \$899.95
ALUMINUM (37 LBS!)
#RH-5046 \$1,195.95

JK GRILLE WIDTH BUMPERS

JEEP JK 2/4DR (2007 - 2016)

**1/4" THICK STEEL OR ALUMINUM - FITS FACTORY FOG LIGHTS* - LIGHT TABS
TUBULAR WINCH GUARD - 1" THICK RECOVERY TABS - POWDER COAT INCLUDED
HARDWARE INCLUDED - SWAY BAR SKID PLATE INTEGRATED - NO DRILLING REQUIRED!
WINCH PLATE INCLUDED IN ALL MODELS - ALL RH4X4 JK BUMPERS ARE FLAT TOWABLE!**

*DEM PLASTIC BUMPER FOGS ONLY

JK 2012 - 2016 VACUUM PUMP RELOCATION KIT

#RH-5011 \$29.95
REQ'D ON LOWERED WINCH BUMPERS

WARN Authorized Distributor
Contact us to add any
WARN Winch to your order.



FAIRLEAD MOUNT INCLUDED!

GRILLE WIDTH STANDARD WINCH

STEEL
#RH-5001-B \$579.95
ALUMINUM (35 LBS!)
#RH-5041 \$775.95



LOWERED WINCH PLATE

GRILLE WIDTH LOWERED WINCH

STEEL
#RH-5002 \$579.95
ALUMINUM (35 LBS!)
#RH-5042 \$775.95



FAIRLEAD MOUNT INCLUDED!

GRILLE WIDTH STANDARD WINCH STINGER

STEEL
#RH-5007 \$629.95



LOWERED WINCH PLATE

GRILLE WIDTH LOWERED WINCH STINGER

STEEL
#RH-5008 \$629.95

JK PRERUNNER BUMPERS

JEEP JK 2/4DR (2007 - CURRENT)

1/4" THICK STEEL - LIGHT TABS INCLUDED ON WINCH GUARD HOOP
 TUBULAR WINCH GUARD - 1" THICK RECOVERY TABS - POWDER COAT INCLUDED
 HARDWARE INCLUDED - SWAY BAR SKID PLATE INTEGRATED - NO DRILLING REQUIRED!
 WINCH PLATE INCLUDED IN ALL MODELS - ALL RH4X4 JK BUMPERS ARE FLAT TOWABLE!



FAIRLEAD MOUNT INCLUDED



Authorized Distributor
 Contact us to add any
 WARN Winch to your order.



LOWERED WINCH PLATE

PRERUNNER LOWERED WINCH

#RH-5004 \$689.95 *RH-5011 REQUIRED ON
 30% MORE GRILLE AIRFLOW 2012 - 2016 JEEP JK'S
 NO FOG LIGHT CUTOUT
 INCLUDES LIGHT TABS ON WINCH GUARD

PRERUNNER STANDARD WINCH

#RH-5003 \$689.95
 INCLUDES PROVISION FOR OEM FOG LIGHTS
 INCLUDES LIGHT TABS ON WINCH GUARD
 DOES NOT REQUIRE VACUUM PUMP RELOC KIT

FLAT TOWING SOLVED

ALL ROCK HARD 4X4 FRONT BUMPERS

ALL ROCK HARD 4X4 FRONT BUMPERS CAN BE UPGRADED WITH OUR LASER CUT
 TOW BAR BRACKET ADAPTERS! DON'T GIVE UP YOUR GROUND CLEARNACE WITH
 A BASE PLATE - FLAT TOW SAFELY AND SECURELY WITH ROCK HARD 4X4!

100% BOLT ON INSTALL FOR ALL RH4X4 JK FRONT BUMPERS AND RH-4010. SOME DRILLING REQUIRED FOR ALL OTHER RH4X4 BUMPERS.

TOW BAR BRACKET ADAPTERS

BLUE OX / DEMCO
 #RH-8000-BO \$69.95
 ROAD MASTER
 #RH-8000-RM \$69.95
 REESE
 #RH-8000-RS \$69.95



RH-8000-RM SHOWN



NO MORE BASEPLATE!

100% BOLT ON INSTALLATION

JK OEM BUMPER UPGRADES

JEEP JK 2/4DR (2007 - CURRENT)

100% BOLT ON WINCH PLATE FITS ALL POPULAR SELF-RECOVERY WINCHES!
 NO DRILLING OR CUTTING - INSTALLS IN MINUTES WITH HAND TOOLS
 DOES NOT REQUIRE VACUUM PUMP RELOCATION KIT
 OPTIONAL LIGHT MOUNTS AND GRILLE GUARDS TO UPGRADE YOUR WINCH PLATE



FITS ALL POPULAR WINCHES INCLUDING
 ZEON AND POWERPLANT!

BEST SELLER!
 100% BOLT ON WINCH PLATE

JK WINCH PLATE - PLASTIC BUMPER

#RH-5010 \$169.95

JK WINCH PLATE - 10A/HARDROCK

#RH-5016 - CALL FOR DETAILS

REQUIRES FACTORY TOW HOOKS
 DOES NOT REQUIRE VAC PUMP RELOC KIT
 BRACES WITH OEM TOW HOOKS (REQUIRED)



Authorized Distributor
 Contact us to add any
 WARN Winch to your order.



WINCH PLATE GRILLE GUARD AND/OR WELDED LIGHT TABS

*RH-5010 REQUIRED
 *FITS OEM PLASTIC BUMPER ONLY

STANDARD WINCH + LIGHT TABS

#RH-5013 \$79.95

POWERPLANT WINCH + LIGHT TABS

#RH-5014 \$79.95

STANARD WINCH + NO LIGHT TABS

#RH-5015 \$75.95

OEM BUMPER LIGHT MOUNT AND GRILLE GUARD

LIGHT MOUNT 10" WIDE LIGHT BAR TABS OR
 INDIVIDUAL LIGHT PODS

*FITS OEM PLASTIC BUMPER ONLY

#RH-6060 \$129.95

LIGHT MOUNT + GRILLE GUARD
 HOOP. FITS 10" LIGHT BAR OR INDIVIDUAL
 LIGHT PODS

*FITS OEM PLASTIC BUMPER ONLY

#RH-6061 \$149.95



JK REAR BUMPERS + TIRE CARRIER

JEOP JK 2/4DR (2007 - CURRENT)

100% BOLT ON REAR BUMPER AVAILABLE IN 1/4" THICK STEEL OR ALUMINUM
TIRE CARRIER AVAILABLE ON STEEL BUMPER ONLY - POWDER COAT INCLUDED
HI-LIFT JACK MOUNT INCLUDED + CB ANTENNA TAB - 1" THICK RECOVERY TABS
CB ANTENNA MOUNT INCLUDED ON TIRE CARRIER - HOLDS UP TO 38" TIRE!



JK REAR BUMPER MODELS

STEEL WITH TIRE CARRIER
#RH-5001 \$1189.95

STEEL NON-TIRE CARRIER
#RH-5000 \$689.95 *INCLUDES RECEIVER

ALUMINUM NON-TIRE CARRIER
40 LBS! *INCLUDES #RH-5000-R *USES OEM RECEIVER
#RH-5040 \$799.95



RH-5040 SHOWN

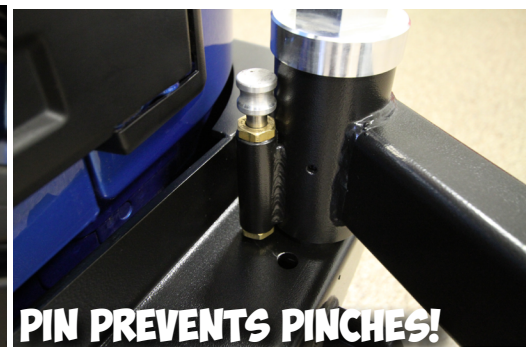
WE ARE PROUD TO PRODUCE THE ONLY 1/4" THICK STEEL TIRE CARRIER ON THE MARKET! RATTLE FREE DESIGN - FITS UP TO 38" SPARE WITH AFTERMARKET WHEEL!

2 STAGE LATCH AND STRIKER COMBO IS EASY TO OPERATE AND CANNOT OPEN WHEN TIRE CARRIER ARM IS CLOSED



EASY TO OPEN LATCH!

DROP DOWN SAFETY PIN PREVENTS TIRE CARRIER FROM CLOSING UNEXPECTEDLY
1-1/4" STEEL SPINDLE IS FULLY GREASABLE



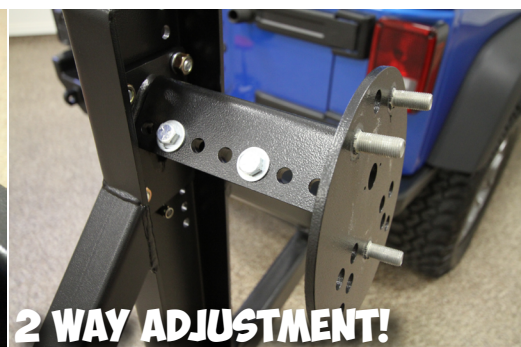
PIN PREVENTS PINCHES!

STEEL BUMPER INCLUDES 2" TOW RATED RECEIVER + LASER CUT WIRE HARNESS MOUNT AND SAFETY CHAIN HOOKS
ALUMINUM BUMPER RETAINS FACTORY/OEM RECEIVER



TOW READY!

SPARE TIRE MOUNT IS FULLY ADJUSTABLE FOR MOST POPULAR TIRE SIZE AND WHEEL OFFSETS!



2 WAY ADJUSTMENT!

REAR BUMPER UPGRADES

JEOP JK 2/4DR (2007 - CURRENT)



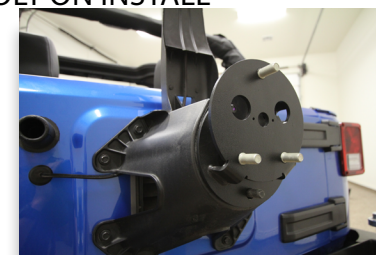
TIRE CARRIER ROCK RACK CARGO BASKET

#RH-2004 \$249.95
SUPPORTS UP TO 100 LBS!
100% BOLT ON INSTALL
ADJUSTABLE HEIGHT BASKET
POWDER COAT INCLUDED
GAIN NEARLY 5 SQ. FT. OF CARGO SPACE!
FITS 2"X2" SQUARE TUBE 45° CARRIERS
INSIDE DIMS: 5-1/4" X 18-1/4" X 38-1/2"



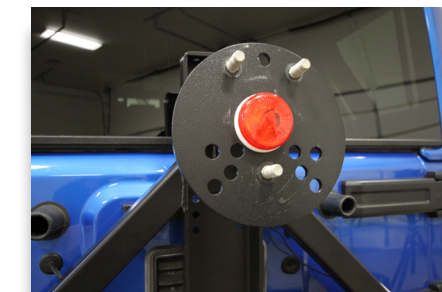
OEM MUFFLER SKID PLATE

STEEL
#RH-5001-A \$149.95
ALUMINUM
#RH-5047 \$179.95
RH4X4 REAR BUMPER REQUIRED
100% BOLT ON INSTALL



TIRE CARRIER TANK MOUNTS

LEFT DRIVER SIDE #RH-2003-LT \$129.95
RIGHT PASSENGER SIDE #RH-2003-RT \$129.95
FITS NATO, ROTOPAX AND CO2 TANKS
CB ANTENNA MOUNT TAB INCLUDED
100% BOLT ON INSTALL
ADJUSTABLE HEIGHT
POWDER COAT INCLUDED
SECURE ADJUSTABLE STRAPS INCLUDED



3RD BRAKE LIGHT

#RH-2002-TL \$14.95
FITS 2-1/2" BORE HOLES
MOUNTS TO TIRE CARRIER
SOME WIRING REQUIRED
CONNECTORS INCLUDED

LICENSE PLATE MOUNT

#RH-4006 \$99.95
LED PLATE AND 3RD BRAKE LIGHT WITH RELOCATION KIT
#RH-4007 \$49.95
LICENSE PLATE MOUNT ONLY



SPARE TIRE RELOCATION BRACKET

#RH-5000-R \$69.95
MOVES SPARE TIRE UP AND OUT 1.5"
ALLOWS FOR OVERSIZED SPARES ON OEM TIRE CARRIER

JK SKID PLATES

JEEP JK 2/4DR (2007 - CURRENT)
THE ORIGINAL, MOST TRUSTED, AND PROVEN SKID PLATE SYSTEM ON THE MARKET FOR THE JEEP WRANGLER JK!



OIL PAN / TRANSMISSION SKID PLATE

FUEL / GAS TANK SKID PLATE

EVAPORATOR CANISTER SKID PLATE

TRANSFER CASE SKID PLATE

EXTREME DUTY DRIVETRAIN PROTECTION
 LASER CUT + CNC BENT + JIG WELDED
 NO WELDING REQUIRED TO INSTALL
 SHORT OR LONG ARM SUSPENSION
 POWDER COAT INCLUDED ON ALL SKIDS
 ALL HARDWARE INCLUDED
SKID PLATES SOLD SEPARATELY
EFFORTLESS OIL CHANGES
 (CAN BE INSTALLED INDIVIDUALLY OR AS A FULL SYSTEM)



OIL PAN / TRANS SKID PLATE - 3/16" STEEL
 2007 - 2016 JK 2/4DR SHORT ARM SUSPENSION
 #RH-6003 \$389.95

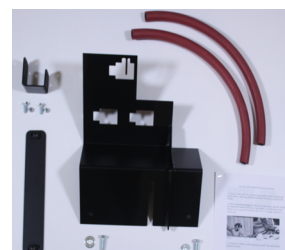
2007 - 2016 JK 2/4DR LONG ARM SUSPENSION
 #RH-6000-LA \$389.95

TRANSFER CASE SKID PLATE - 3/16" STEEL
 2007 - 2016 LONG ARM SUSPENSION
 #RH-6004 \$229.95

FUEL / GAS TANK SKID PLATE - 3/16" STEEL
 2007 - 2016 4DR/UNLIMITED
 #RH-6001 \$369.95

2007 - 2016 2DR
 #RH-6002 \$369.95

EVAPORATOR CANISTER SKID PLATE - 3/16" STEEL
 2007 - 2016 2/4DR
 #RH-6005 \$99.95



EVAP CANISTER RELOCATION
 RELOCATES CANISTER ABOVE REAR AXLE HOUSING
 2007 - 2011 JK 2/4DR
 #RH-6005-A \$119.95
 2012 - 2016 JK 2/4DR
 #RH-6005-B \$119.95



AEV HEMI SKID MOUNTS
 2007 - 2016 JK 2/4DR
 #RH-6003-HEMI \$39.95

OIL PAN / TRANS SKID PLATE - 1/4" ALUMINUM
 2007 - 2016 JK 2/4DR SHORT ARM SUSPENSION
 #RH-6043 \$526.95
 2007 - 2016 JK 2/4DR LONG ARM SUSPENSION
 #RH-6040 \$526.95

TRANSFER CASE SKID PLATE - 1/4" ALUMINUM
 2007 - 2016 JK 2/4DR LONG ARM SUSPENSION
 #RH-6044 \$310.95

FUEL / GAS TANK SKID PLATE - 1/4" ALUMINUM
 2007 - 2016 4DR/UNLIMITED
 #RH-6041 \$499.95
 2007 - 2016 2DR
 #RH-6042 \$499.95

EVAPORATOR CANISTER SKID PLATE - 1/4" ALUMINUM
 2007 - 2016 2/4DR UNLIMITED
 #RH-6045 \$135.95

TUBULAR ROCKER GUARDS

JEEP JK 2/4DR (2007 - CURRENT)
100% HEAVY DUTY - 100% BOLT ON INSTALL

*CAN BE SPECIAL ORDERED WITH TUBES FACING DOWN.



MOUNTS TO BODY BOLTS + PINCH SEAM
HEAVY DUTY ROCKER PROTECTION
POWDER COAT INCLUDED
NO DRILLING REQUIRED
INSTALLS IN MINUTES



FITS TRIMMED WELLS



FULLY REPLACES OEM
USABLE 3.5" STEP

JK TUBULAR 4DR ROCKER GUARDS
 2007 - 2016 JK 4DR/UNLIMITED
 #RH-6009 \$459.95

JK TUBULAR 2DR ROCKER GUARDS
 2007 - 2016 JK 2DR
 #RH-6008 \$459.95

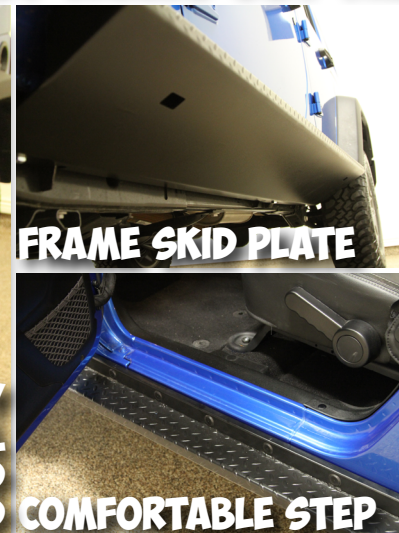
BOAT SIDE ROCK SLIDERS

JEEP JK 2/4DR (2007 - CURRENT)
FOR THE TOUGHEST TRAILS OUT THERE!

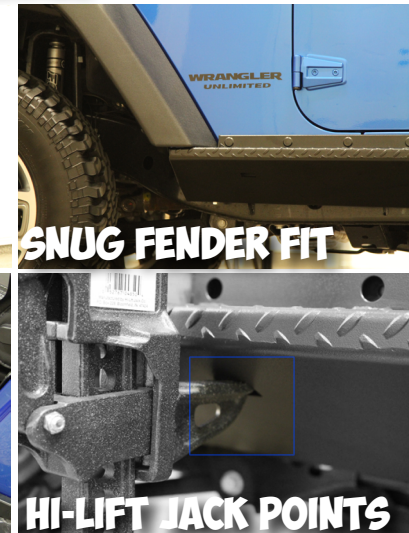


JK BOAT SIDE ROCK SLIDERS SMOOTH TOP
 2007 - 2016 JK 4DR W/ SMOOTH PLATE
 #RH-6006-S \$799.95

2007 - 2016 JK 2DR W/ SMOOTH PLATE
 #RH-6007-S \$779.95



FRAME SKID PLATE



SNUG FENDER FIT

COMFORTABLE STEP

HI-LIFT JACK POINTS

JK BOAT SIDE ROCK SLIDERS TREAD TOP
 2007 - 2016 JK 4DR W/ TREAD PLATE
 #RH-6006-T \$799.95

2007 - 2016 JK 2DR W/ TREAD PLATE
 #RH-6007-T \$779.95



TJ/LJ SPORT CAGE

JEEP WRANGLER TJ/LJ UNLIMITED (1997 - 2006)
PREMIUM - PATENTED - PROVEN "THE ORIGINAL BOLT IN CAGE"
REQUIRES NO WELDING - PATENTED STEEL LOCKING COLLARS



TJ/LJ ULTIMATE SPORT CAGE

*SHIPS BARE STEEL - UNCOATED

MAIN SPORT CAGE
 #RH-1001 \$649.95

MAIN SPORT CAGE INCLUDES:
 OVERHEAD T-SECTION
 LEFT + RIGHT + UPRIGHTS
 LOWER WINDSHIELD BAR
 WELDED GRAB HANDLES
 GALVANIZED HARDWARE

FACTORY HARD/SOFT TOP
 COMPATIBLE. WORKS WITH
 FULL AND HALF DOORS. ALL
 HARDWARE INCLUDED.

WORKS WITH SOUND BAR AND PODS!



NO WELDING



OVERHEAD T-SECTION INCLUDES
 ACCESSORY MOUNTING PLATE
 FOR CB RADIO, FLASHLIGHT, ETC.
 CAN BE SPECIAL ORDERED WITHOUT

WORKS WITH ALL FACTORY CAGE
 SECTIONS PLUS SOUND BAR OR
 SOUND PODS. FACTORY HARD TOP AND
 SOFT TOP COMPATIBLE

WELDED GRAB HANDLES MAKE
 GETTING IN AND OUT OF YOUR
 JEEP A BREEZE. DASH SUPPORT
 WORKS WITH FULL/SOFT DOORS



ACCESSORY PLATE



SPORT CAGE UPGRADES

TJ/LJ WRANGLER (1997 - 2006) / PADDING KITS AVAILABLE



STRAIGHT ACROSS REAR BAR

*SHIPS BARE STEEL - UNCOATED

TJ/LJ (1997 - 2006)
 #RH-1001-B \$129.95



OVERHEAD ANGLE BARS (PAIR)

*SHIPS BARE STEEL - UNCOATED

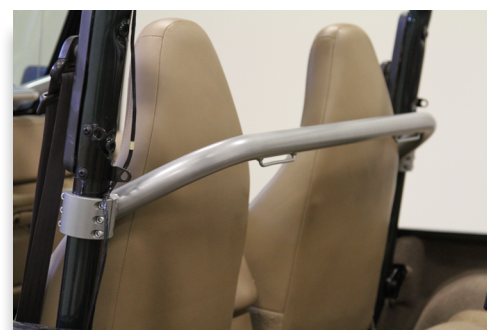
TJ/LJ (1997 - 2002) SOUND BAR
 #RH-1001-A \$159.95
 (1997 - 2002) SOUND PODS
 #RH-1001-F \$159.95



5-WAY ACCESSORY MOUNT

*SHIPS BARE ALUMINUM - UNCOATED
 FITS ALL 1-3/4" OD TUBING!

#RH-1021 \$39.95



FRONT SEAT HARNESS BAR

*SHIPS BARE STEEL - UNCOATED

TJ/LJ (1997 - 2006)
 #RH-1004 \$149.95



ANGLED HARNESS BAR

*SHIPS BARE STEEL - UNCOATED

TJ/LJ (1997 - 2006) DRIVER SIDE
 #RH-1004-LT \$129.95
 TJ/LJ (1997 - 2006) PASS. SIDE
 #RH-1001-RT \$129.95



REAR SEAT HARNESS BAR

*SHIPS BARE STEEL - UNCOATED

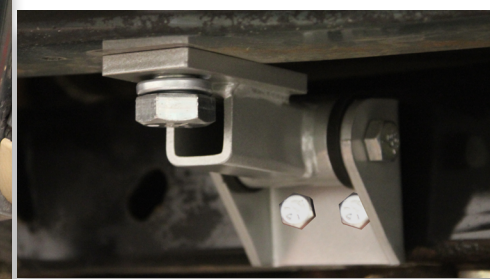
TJ (1997 - 2006)
 #RH-1001-J \$149.95
 LJ (2003 - 2006)
 #RH-1001-U \$149.95



FLOOR KIT

*SHIPS BARE STEEL - UNCOATED

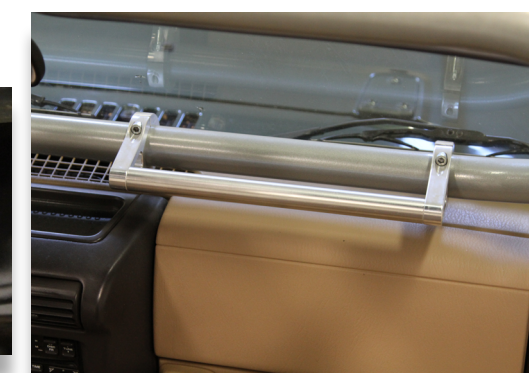
TJ/LJ (1997 - 2006)
 #RH-1001-D \$169.95



FRAME KIT*

*SHIPS BARE STEEL - UNCOATED

TJ/LJ (1997 - 2006)
 #RH-1001-E \$109.95
 *REQUIRES RH-1001-D



ALUMINUM GRAB HANDLE

*SHIPS BARE ALUMINUM - UNCOATED
 FITS ALL 1-3/4" OD TUBING!

6" #RH-1020-S \$79.95
 12" #RH-1020-L \$79.95

FRONT BUMPERS

CJ5 (1976 - 1983) - CJ7 (1976 - 1986) - CJ8 (1981 - 1986)
YJ WRANGLER (1987 - 1995) - TJ/LJ WRANGLER (1997 - 2006)

PATRIOT SERIES

**OUR BEST SELLING CJ TO WRANGLER BUMPER - FOR GOOD REASON!
WINCH PLATE INCLUDED - POWDER COAT INCLUDED - 2 LIGHT TABS
1" THICK RECOVERY TABS - 100% BOLT ON INSTALL - FLAT TOWABLE**

BEST SELLER!



**WINCH READY + PRE-DRILLED FOR
TOW BAR BRACKETS! SEE PG 11.**

EXTREME DUTY FRONT BUMPER

STEEL

#RH-4010 \$599.95

ALUMINUM 33 LBS!

#RH-4050 \$799.95

1/4" THICK STEEL OR ALUMINUM
100% BOLT ON INSTALL
LASER CUT AND CNC BENT
HIGH CLEARANCE DESIGN
INCLUDES WINCH PLATE
DOUBLE WELDED RECOVERY TABS
FLAT TOW BRACKETS AVAILABLE
EXTREME DUTY ARMOR UPGRADE!



WINCH AND LIGHTS READY!



Authorized Distributor
Contact us to add any
WARN Winch to your order.

2 WELDED LIGHT TABS FIT
ALL POPULAR 10" LED
LIGHT PODS OR MOUNT
INDIVIDUAL LIGHT PODS

STEEL ARMOR COMES
UP TO AND PROTECTS
FENDERS FROM TRAIL
DAMAGE AND DEBRIS

CLEAN, HIGH CLEARANCE
PROFILE PLUS EXTREME
DUTY CONSTRUCTION ON
A FULLY LOADED BUMPER

1" THICK RECOVERY TABS
WINCH FAIRLEAD MOUNT
TOW BAR BRACKET READY
OPTIONAL STEERING SKID



**LIGHT TABS + WINCH
PLATE INCLUDED**



**HIGH CLEARANCE
FENDER WINGS**



**WINCH GUARD
INCLUDED**



**PRE-DRILLED FOR
TOW BAR BRACKETS
SEE PG 11**

FRONT BUMPERS

CJ5 (1976 - 1983) - CJ7 (1976 - 1986) - CJ8 (1981 - 1986)
YJ WRANGLER (1987 - 1995) - TJ/LJ WRANGLER (1997 - 2006)

LEGENDARY SERIES

**CLASSIC LOOKS WITH ALL THE RIGHT FEATURES!
WINCH PLATE INCLUDED - POWDER COAT INCLUDED - 2 LIGHT TABS
1" THICK RECOVERY TABS - 100% BOLT ON INSTALL**



BEST SELLER!

ANGLED FORWARD HOOP

46" WIDE

#RH-4001-C46 \$364.95

54" WIDE

#RH-4001-C54 \$384.95

60" WIDE

#RH-4001-C60 \$404.95



SHORTER PROFILE!

STRAIGHT UP HOOP

46" WIDE

#RH-4005-C46 \$364.95

54" WIDE

#RH-4005-C54 \$384.95

60" WIDE

#RH-4005-C60 \$404.95



EXTRA PROTECTION!

STRAIGHT UP HOOP W/ TUBE

46" WIDE

#RH-4005-CX46 \$384.95

54" WIDE

#RH-4005-CX54 \$404.95

60" WIDE

#RH-4005-CX60 \$424.95



CLIP ON FRONT PLATE KIT

#RH-4006-F \$29.95

FITS ALL POPULAR
WINCH ROLLER FAIRLEADS
HARDWARE INCLUDED
CABLE PREVENTS LOSS



WINCH AND LIGHTS READY!

STEERING BOX SKID PLATE

TJ/LJ, YJ

#RH-4002 \$39.95

JEEP CJ

#RH-4002-CJ \$39.95

FITS ALL ROCK HARD 4X4 TJ/LJ, YJ, CJ FRONT BUMPERS
BOLT ON INSTALL, POWDER COAT INCLUDED



Authorized Distributor
Contact us to add any
WARN Winch to your order.



REAR BUMPERS + TIRE CARRIER

CJ5 (1976 - 1983) - CJ7 (1976 - 1986) - CJ8 (1981 - 1986)
YJ WRANGLER (1987 - 1995) - TJ/LJ WRANGLER (1997 - 2006)



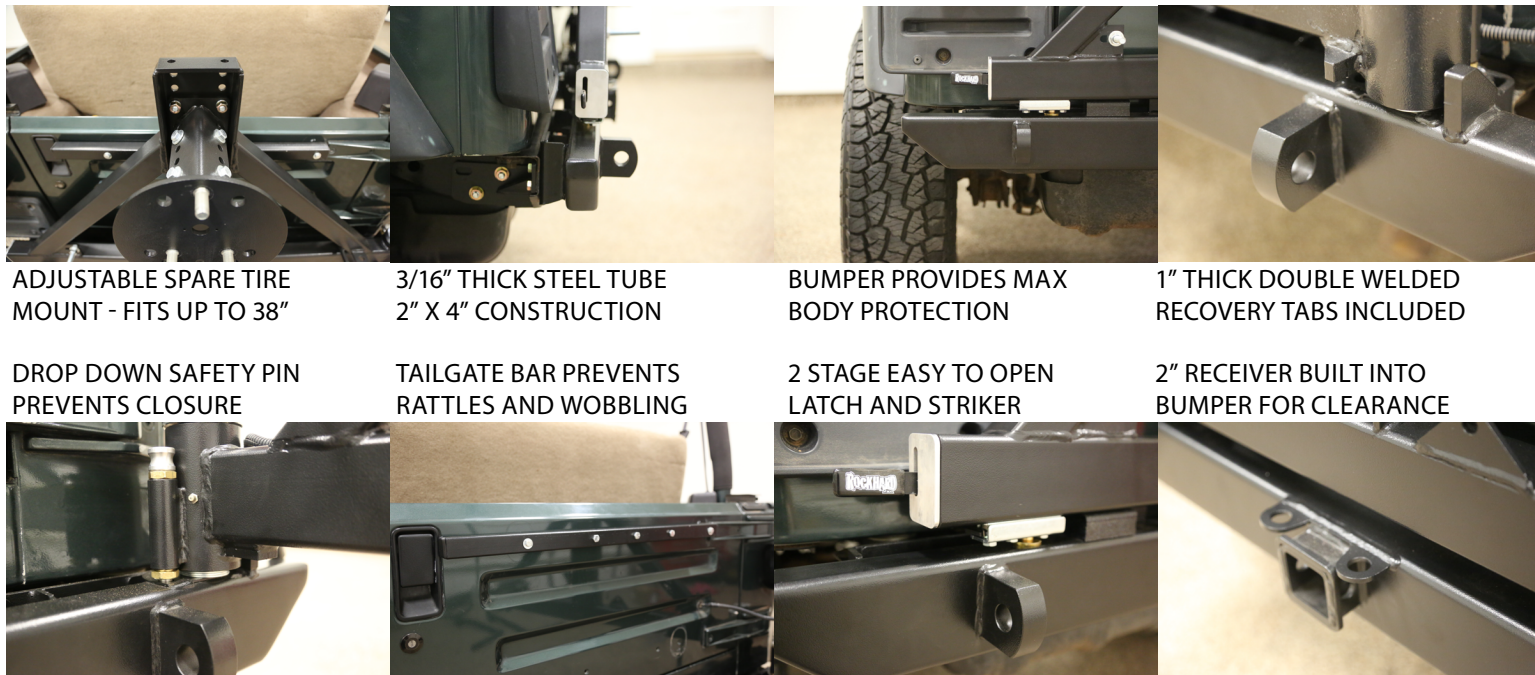
HI-LIFT JACK AND CB ANTENNA MOUNTS INCLUDED!

REAR BUMPER MODELS *FRAME BRACE KIT REQUIRED SEE PAGE 22

WITH TIRE CARRIER
#RH-2001-C \$849.95

BUMPER ONLY
#RH-2001-AC \$329.95

POWDER COAT INCLUDED
FITS UP TO 38" SPARE TIRE
OPTIONAL TANK MOUNT
OPTIONAL CARGO RACK
INTEGRATED 2" RECEIVER
HEAVY DUTY BEARINGS
ADJUSTABLE SPARE MOUNT
ALL HARDWARE INCLUDED
LASER CUT AND CNC BENT
HIGH CLEARANCE DESIGN
WORKS WITH 1" BODY LIFT
HI LIFT JACK MOUNT INCLUDED
CB ANTENNA TAB INCLUDED



ADJUSTABLE SPARE TIRE MOUNT - FITS UP TO 38"

3/16" THICK STEEL TUBE 2" X 4" CONSTRUCTION

BUMPER PROVIDES MAX BODY PROTECTION

1" THICK DOUBLE WELDED RECOVERY TABS INCLUDED

DROP DOWN SAFETY PIN PREVENTS CLOSURE

TAILGATE BAR PREVENTS RATTLES AND WOBBLING

2 STAGE EASY TO OPEN LATCH AND STRIKER

2" RECEIVER BUILT INTO BUMPER FOR CLEARANCE

REAR BUMPER UPGRADES

CJ5 (1976 - 1983) - CJ7 (1976 - 1986) - CJ8 (1981 - 1986)
YJ WRANGLER (1987 - 1995) - TJ/LJ WRANGLER (1997 - 2006)



TIRE CARRIER CARGO BASKET

#RH-2004 \$249.95
SUPPORTS UP TO 100 LBS!
100% BOLT ON INSTALL
ADJUSTABLE HEIGHT BASKET
POWDER COAT INCLUDED
FITS 2"X2" SQUARE TUBE 45° CARRIERS
GAIN NEARLY 5 SQ. FT. OF CARGO SPACE!
INSIDE DIMS: 5-1/4" X 18-1/4" X 38-1/2"

TIRE CARRIER TANK MOUNTS

LEFT DRIVER SIDE #RH-2003-LT \$129.95
RIGHT PASS. SIDE #RH-2003-RT \$129.95
FITS NATO, ROTOPAX AND CO2 TANKS
CB ANTENNA MOUNT TABS INCLUDED
100% BOLT ON INSTALL
ADJUSTABLE HEIGHT
POWDER COAT INCLUDED
ADJUSTABLE STRAPS INCLUDED



3RD BRAKE LIGHT

#RH-2002-TL \$14.95
FITS 2-1/2" CENTER HOLE
INSTALLS IN MINUTES
INCLUDES CONNECTORS

FRAME BRACE KITS

CJ5 (1976 - 1983) - CJ7 (1976 - 1986) - CJ8 (1981 - 1986)
YJ WRANGLER (1987 - 1995) - TJ/LJ WRANGLER (1997 - 2006)



ALL HARDWARE INCLUDED!

REAR BUMPER FRAME BRACE KIT

JEEP CJ 1976 - 1986
#RH-2001-CJ \$44.95

JEEP YJ 1987 - 1995
*SOME WELDING REQUIRED
#RH-2001-YJ \$44.95

JEEP TJ/LJ 1997 - 2006
#RH-2001-TJ \$44.95

ALLOWS FOR LARGER SPARES, TOWING,
AND RUNNING TANK MOUNT / ROCK RACK



ROCK SLIDERS

CJ7 (1976 - 1986) - CJ8 (1981 - 1986)

YJ WRANGLER (1987 - 1995) - TJ/LJ WRANGLER (1997 - 2006)



THE RIGHT PROTECTION NEEDED FOR THE TOUGHEST TRAILS!

3/16" LASER CUT + CNC BENT + JIG WELDED STEEL PLATE - 1-3/4" X .120" STEEL TUBING KEEPS YOU OFF THE ROCKS AND WORKS AS A FUNCTIONAL STEP - DESIGNED FOR MAXIMUM GROUND CLEARANCE CAN BE USED AS A JACKING POINT WHEN NEEDED - STAINLESS HARDWARE INCLUDED!

TJ (1997-2006)

UNPAINTED WITHOUT SIDE TUBING	#RH-3001	\$239.95
POWDER COATED BLACK W/OUT SIDE TUBING	#RH-3001-C	\$279.95
UNPAINTED WITH SIDE TUBING	#RH-3001-S	\$269.95
POWDER COATED BLACK WITH SIDE TUBING	#RH-3001-SC	\$319.95

LJ UNLIMITED (2003-2006)

UNPAINTED WITHOUT SIDE TUBING	#RH-3001-U	\$279.95
POWDER COATED BLACK W/OUT TUBING	#RH-3001-UC	\$319.95
UNPAINTED WITH SIDE TUBING	#RH-3001-US	\$319.95
POWDER COATED BLACK WITH SIDE TUBING	#RH-3001-UCS	\$359.95



YJ (1987-1995)

POWDER COATED WITH SIDE TUBING	#RH-3003-YJ	\$359.95
--------------------------------	-------------	----------

CJ7 (1976-1986)

POWDER COATED WITH SIDE TUBING	#RH-3002-CJ	\$359.95
--------------------------------	-------------	----------

CJ8 SCRAMBLER (1981-1986)

POWDER COATED WITH SIDE TUBING	#RH-3005	\$369.95
--------------------------------	----------	----------

FUEL TANK SKID PLATE

TJ/LJ WRANGLER (1997 - 2006)



SKID PLATE
#RH-3008 \$299.95

A MUST HAVE FOR ALL OFF ROADERS!
INSTALLS IN 1 HOUR - PROTECTS FOR A LIFETIME!

3/16" THICK STEEL AND LASER CUT + CNC BENT FOR PRECISE FITMENT. INCLUDES FUEL PUMP PROVISION. RIBS PROVIDE EXTRA STRENGTH. POWDER COAT INCLUDED.

CJ8 SPORT CAGE

JEEP CJ8 (1981 - 1986)

PREMIUM - PATENTED - PROVEN
"THE ORIGINAL BOLT IN CAGE"
PATENTED STEEL LOCKING COLLARS

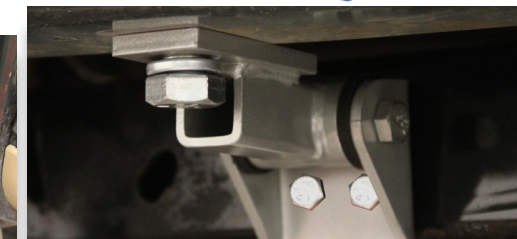


CJ8 REAR ULTIMATE SPORT CAGE

*SHIPS BARE STEEL - UNCOATED
REAR SPORT CAGE "PICK UP CAB"
2" .120 WALL STEEL TUBING
#RH-1005-A \$599.95



FLOOR KIT
*SHIPS BARE STEEL - UNCOATED
JEEP CJ8 1981 - 1986
#RH-1003-F \$169.95



FRAME KIT*
*SHIPS BARE STEEL - UNCOATED
JEEP CJ8 1981 - 1986
#RH-1003-G \$109.95
*REQUIRES RH-1003-F



CJ8 HARNESS BARS
*SHIPS BARE STEEL - UNCOATED
FRONT SEAT HARNESS BAR
#RH-1005-C \$149.95 (OEM 3" HOOP)
REAR SEAT HARNESS BAR
#RH-1005-D \$149.95 (#RH-1005-A REQD.)
FRONT SEAT HARNESS BAR
#RH-1005-E \$149.95 (FOR #RH-1005)

CJ8 "PICK UP CAB" SPORT CAGE

*SHIPS BARE STEEL - UNCOATED
MAIN SPORT CAGE
#RH-1005 \$699.95

MAIN SPORT CAGE INCLUDES:
OVERHEAD T-SECTION
LEFT + RIGHT + UPRIGHTS
LOWER WINDSHIELD BAR
WELDED GRAB HANDLES
IN CAB HOOP (PICTURED)
GALVANIZED HARDWARE

CJ8 "SOFT/HARD TOP" SPORT CAGE

*SHIPS BARE STEEL - UNCOATED
*SOME WELDING REQUIRED
MAIN SPORT CAGE
#RH-1005-B \$699.95

MAIN SPORT CAGE INCLUDES:
OVERHEAD T-SECTION
LEFT + RIGHT + UPRIGHTS
LOWER WINDSHIELD BAR
WELDED GRAB HANDLES
CLAMPS TO FACTORY HOOP
GALVANIZED HARDWARE
REQUIRES 4 SMALL WELDS



YJ SPORT CAGE

JEEP WRANGLER YJ (1987 - 1995)

**PREMIUM - PATENTED - PROVEN "THE ORIGINAL BOLT IN CAGE"
REQUIRES NO WELDING - PATENTED STEEL LOCKING COLLARS**



YJ ULTIMATE SPORT CAGE *SHIPS BARE STEEL - UNCOATED

MAIN SPORT CAGE

#RH-1002 \$649.95

MAIN SPORT CAGE INCLUDES:

- OVERHEAD T-SECTION
- LEFT + RIGHT + UPRIGHTS
- LOWER WINDSHIELD BAR
- WELDED GRAB HANDLES
- GALVANIZED HARDWARE

FACTORY HARD/SOFT TOP COMPATIBLE. WORKS WITH FULL AND HALF DOORS. ALL HARDWARE INCLUDED.



PATENTED!

DASH BAR ATTACHES TO WINDSHIELD FRAME AND IS DESIGNED TO BE COMPATIBLE WITH FACTORY SPEAKERS. HARDWARE INCLUDED.



ALL CONNECTIONS TO FACTORY CAGE BARS USE OUR PATENTED 1/2" THICK STEEL COLLARS. WELDED GRAB HANDLES ARE INCLUDED AND AID IN ENTRY, EXIT.



CAGE TUBING IS 1-3/4" THICK .120 WALL STEEL. WINDSHIELD BAR GIVES ADDED STRENGTH TO INCLUDED DRIVER + PASS. SIDE UPRIGHT BARS. THIS HELPS STIFFEN YOUR CABIN PLUS GIVE YOUR CAGE INCREDIBLE STRENGTH.



NO WELDING

CAGE CONNECTS TO FACTORY HOOP BEHIND FRONT SEATS USING OUR LOCKING COLLAR CAPS. THIS UNBREAKABLE CONNECTION IS ALSO WHERE REAR OVERHEAD ANGLE BARS ATTACH (SOLD SEPARATELY). NO WELDING REQUIRED!

YJ SPORT CAGE UPGRADES

YJ WRANGLER (1981 - 1986) / PADDING KITS AVAILABLE



STRAIGHT ACROSS REAR BAR *SHIPS BARE STEEL - UNCOATED

YJ (1992 - 1995)

#RH-1002-B \$129.95

YJ (1987 - 1991)

#RH-1002-D \$129.95

*REQUIRES RH-1002-C



FRONT SEAT HARNESS BAR *SHIPS BARE STEEL - UNCOATED

YJ (1987 - 1995)

#RH-1004-A \$149.95



ANGLED HARNESS BAR *SHIPS BARE STEEL - UNCOATED

YJ (1987 - 1995) DRIVER SIDE

#RH-1004-LT \$129.95

YJ (1987 - 1995) PASS. SIDE

#RH-1004-RT \$129.95



OVERHEAD ANGLE BARS (PAIR) *SHIPS BARE STEEL - UNCOATED

YJ (1992 - 1995)

#RH-1002-A \$159.95

*DESIGNED TO WORK WITH RH4X4 CAGE
NON-FRONT CAGE CAP KITS:
92-95 #RH-1001-G \$84.95



REAR SIDE + OVERHEAD ANGLE BARS (PAIR) *SHIPS BARE STEEL - UNCOATED

YJ (1992 - 1995)

#RH-1002-C \$329.95

*DESIGNED TO WORK WITH RH4X4 CAGE
NON-FRONT CAGE CAP KITS:
87-91 #RH-1001-G \$84.95



FLOOR KIT *SHIPS BARE STEEL - UNCOATED

YJ (1987 - 1995)

#RH-1002-F \$169.95



FRAME KIT* *SHIPS BARE STEEL - UNCOATED

YJ (1987 - 1995)

#RH-1002-G \$109.95

*REQUIRES #RH-1002-F



REAR SEAT HARNESS BAR *SHIPS BARE STEEL - UNCOATED

YJ (1992 - 1996)

#RH-1002-H \$149.95

YJ (1986 - 1991)*

#RH-1004-YJ \$149.95

*#RH-1002-C REQUIRED

CJ7 SPORT CAGE

JEEP CJ7 (1976 - 1986)

**PREMIUM - PATENTED - PROVEN "THE ORIGINAL BOLT IN CAGE"
REQUIRES NO WELDING - PATENTED STEEL LOCKING COLLARS**



CJ7 ULTIMATE SPORT CAGE *SHIPS BARE STEEL - UNCOATED

1976 - 1978 MAIN SPORT CAGE

#RH-1007 \$649.95

*2" OD BAR MOUNTS TO INCLUDED ANGLE IRON BRACKET ON WHEEL WELL

1979 - 1986 MAIN SPORT CAGE

#RH-1003 \$649.95

*MOUNTS 2-1/4" CAGE TO FLOOR BEHIND SEATS AND WHEEL WELL

MAIN SPORT CAGE INCLUDES:

- OVERHEAD T-SECTION
- LEFT + RIGHT + UPRIGHTS
- LOWER WINDSHIELD BAR
- WELDED GRAB HANDLES
- GALVANIZED HARDWARE



CAGE TUBING IS 1-3/4" THICK .120 WALL STEEL. WINDSHIELD BAR GIVES ADDED STRENGTH TO INCLUDED DRIVER + PASS. SIDE UPRIGHT BARS. THIS HELPS STIFFEN YOUR CABIN PLUS GIVE YOUR CAGE INCREDIBLE STRENGTH.

DASH BAR ATTACHES TO WINDSHIELD FRAME AND IS DESIGNED TO BE COMPATIBLE WITH FACTORY SPEAKERS. HARDWARE INCLUDED.



ALL CONNECTIONS TO FACTORY CAGE BARS USE OUR PATENTED 1/2" THICK STEEL COLLARS.



SHOWN WITH FRONT MAIN CAGE, REAR SIDE AND OVERHEAD ANGLE BARS, PLUS STRAIGHT ACROSS THE REAR BAR. THE ULTIMATE PROTECTION - THE ULTIMATE BOLT-IN SPORT CAGE!

CJ7 SPORT CAGE UPGRADES

JEEP CJ7 (1976 - 1986) / PADDING KITS AVAILABLE



STRAIGHT ACROSS REAR BAR *SHIPS BARE STEEL - UNCOATED

1976 - 1978

#RH-1007-B \$129.95

1979 - 1986

#RH-1003-B \$129.95



REAR SIDE AND OVERHEAD ANGLE BARS* *SHIPS BARE STEEL - UNCOATED

1976 - 1978

#RH-1007-A \$329.95

1979 - 1986

#RH-1003-A \$329.95

*DESIGNED TO WORK WITH RH4X4 CAGE
NON-FRONT CAGE CAP KITS:
(76-78) #RH-1007-D \$84.95
(79-86) #RH-1003-I \$84.95



FRONT SEAT HARNESS BAR *SHIPS BARE STEEL - UNCOATED

1976 - 1978

#RH-1004-C \$149.95

1979 - 1986

#RH-1004-A \$149.95



ANGLED HARNESS BAR *SHIPS BARE STEEL - UNCOATED

1976 - 1978 DRIVER SIDE

#RH-1009-LT \$129.95

1976 - 1978 PASS. SIDE

#RH-1009-RT \$129.95

1979 - 1986 DRIVER SIDE

#RH-1004-LT \$129.95

1979 - 1986 PASS. SIDE

#RH-1004-RT \$129.95



REAR SEAT HARNESS BAR *SHIPS BARE STEEL - UNCOATED

1979 - 1986

#RH-1004-E \$149.95



FLOOR KIT *SHIPS BARE STEEL - UNCOATED

1976 - 1986

#RH-1003-F \$169.95



FRAME KIT* *SHIPS BARE STEEL - UNCOATED

1976 - 1986 *REQUIRES #RH-1003-F

#RH-1003-G \$109.95



ALUMINUM GRAB HANDLE *SHIPS BARE ALUMINUM - UNCOATED FITS ALL 1-3/4" OD TUBING!

6" #RH-1020-S \$79.95

12" #RH-1020-L \$79.95

CJ5 SPORT CAGE

JEEP CJ5 (1955 - 1984)

**PREMIUM - PATENTED - PROVEN "THE ORIGINAL BOLT IN CAGE"
REQUIRES NO WELDING - PATENTED STEEL LOCKING COLLARS**



CJ5 ULTIMATE SPORT CAGE *SHIPS BARE STEEL - UNCOATED

1955 - 1975 MAIN SPORT CAGE

#RH-1010-A \$649.95

*REQUIRES #RH-1010

*FOR 2" CAGE

1976 - 1978 MAIN SPORT CAGE

#RH-1006 \$649.95

*FOR 2" CAGE

1979 - 1983 MAIN SPORT CAGE

#RH-1008 \$649.95

*FOR 2-1/4" CAGE

MAIN SPORT CAGE INCLUDES:
OVERHEAD T-SECTION
LEFT + RIGHT + UPRIGHTS
LOWER WINDSHIELD BAR
WELDED GRAB HANDLES
GALVANIZED HARDWARE

CJ5 REPLACEMENT FACTORY STYLE HOOP + SUPPORTS *SHIPS BARE STEEL - UNCOATED

REPLACEMENT FACTORY HOOP UP TO 1978

#RH-1010 \$329.95

*MAY BE REQUIRED ON #RH-1010-A
CALL FOR DETAILS

REPLACEMENT HOOP INCLUDES:
SINGLE PIECE HOOP
LEFT + RIGHT + UPRIGHTS
REAR MOUNTING PLATES
GALVANIZED HARDWARE



CJ5 SPORT CAGE UPGRADES

JEEP CJ5 (1955 - 1983) / PADDING KITS AVAILABLE



REAR SIDE BARS (PAIR) + STRAIGHT ACROSS REAR BAR *SHIPS BARE STEEL - UNCOATED

1979 - 1983

#RH-1008-A \$329.95

1955 - 1978

#RH-1006-A \$329.95



FRONT SEAT HARNESS BAR *SHIPS BARE STEEL - UNCOATED

1955 - 1975

#RH-1010-B \$149.95

1976 - 1978

#RH-1004-C \$149.95

1979 - 1983

#RH-1004-B \$149.95



NON-SLIP GRAB HANDLE

VELCRO - UNIVERSAL

#RH-1025 \$24.95

SOLD INDIVIDUALLY



FLOOR KIT *SHIPS BARE STEEL - UNCOATED

1976 - 1983

#RH-1003-F \$169.95



ANGLED HARNESS BAR *SHIPS BARE STEEL - UNCOATED

1976 - 1978 DRIVER SIDE

#RH-1009-LT \$129.95

1976 - 1978 PASS. SIDE

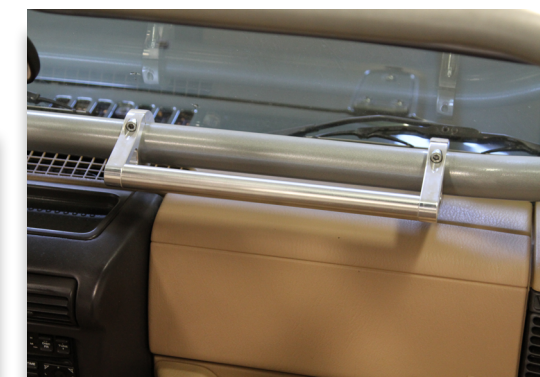
#RH-1009-RT \$129.95

1979 - 1983 DRIVER SIDE

#RH-1004-LT \$129.95

1979 - 1983 PASS. SIDE

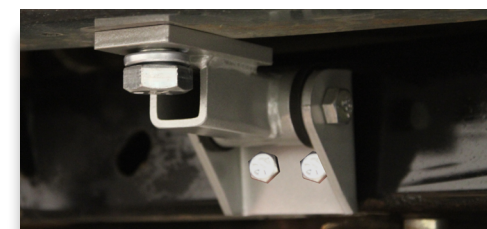
#RH-1004-RT \$129.95



ALUMINUM GRAB HANDLE *SHIPS BARE ALUMINUM - UNCOATED FITS ALL 1-3/4" OD TUBING!

6" #RH-1020-S \$79.95

12" #RH-1020-L \$79.95



FRAME KIT* *SHIPS BARE STEEL - UNCOATED

1976 - 1984 *REQUIRES RH-1003-F

#RH-1003-G \$109.95



5-WAY ACCESSORY MOUNT *SHIPS BARE ALUMINUM - UNCOATED FITS ALL 1-3/4" OD TUBING!

#RH-1021 \$39.95

XJ SPORT CAGE

JEEP CHEROKEE XJ 2/4DR (1984 - 2001)

PROTECTS FROM WINDSHIELD TO CARGO AREA AND IS CONSTRUCTED FROM 1-3/4" X .120" STEEL TUBING. NO WELDING REQUIRED. POWDER COAT NOT INCLUDED. SOME FLOOR DRILLING REQUIRED.



CHEROKEE SPORT CAGE MODELS

*SHIPS BARE STEEL - UNCOATED

- 1984 - 1996 4 DOOR
#RH-1012 \$999.95
- 1984 - 1996 2 DOOR
#RH-1012-2 \$999.95
- 1997 - 2001 4 DOOR
#RH-1012-1 \$999.95
- 1997 - 2001 2 DOOR
#RH-1012-3 \$999.95
- 1986 - 1992 COMANCHE TRUCK
#RH-1012-5 \$799.95

MAIN SPORT CAGE INCLUDES:
 3 MAIN HOOPS
 WINDSHIELD SIDE BARS
 ACROSS DASH BAR
 OUTER CONNECTING BARS
 45 DEGREE FORWARD BARS
 UNDERCARRIAGE MOUNTS
 ALL HARDWARE



DESIGNED TO FIT SNUGLY AROUND YOUR DASH



HIGH VISIBILITY THROUGH FRONT CAGE SECTION



REAR CARGO AREA KEEPS PLENTY OF STORAGE SPACE



DASH PLATES GO TO THE FLOOR

WORKS WITH DOME LIGHT OR OVERHEAD CONSOLE

FLOOR MOUNTS STIFFEN + BRACE CHASSIS

HARDWARE INCLUDED THROUGHOUT

MOUNTING PLATES GO THROUGH FLOOR



XJ SPORT CAGE UPGRADES

JEEP CHEROKEE XJ 2/4DR (1984 - 2001)



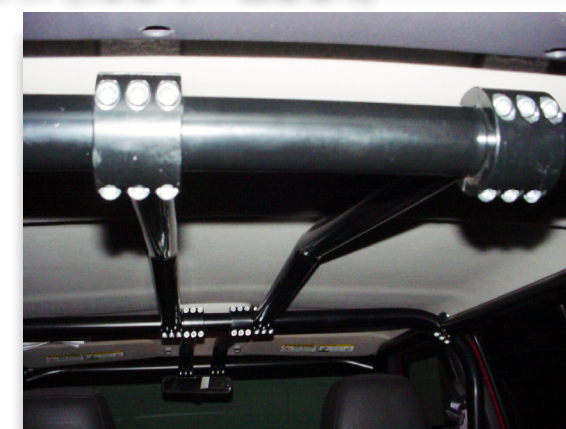
XJ FRONT OVERHEAD CENTER BAR

*SHIPS BARE STEEL - UNCOATED

- 1997 - 2001 4 DOOR
#RH-1012-G \$99.95 EACH
- 1997 - 2001 2 DOOR
#RH-1012-1 \$99.95 EACH
- 1984 - 1996 4 DOOR
#RH-1012-A \$99.95 EACH
- 1984 - 1996 2 DOOR
#RH-1012-2FC \$99.95 EACH



5-WAY ACCESSORY MOUNT
 *SHIPS BARE ALUMINUM - UNCOATED
 FITS ALL 1-3/4" OD TUBING!
 #RH-1021 \$39.95



XJ FRONT OVERHEAD CENTER BAR

*SHIPS BARE STEEL - UNCOATED

- 1997 - 2001 4 DOOR
#RH-1012-H \$99.95 EACH
- 1984 - 1996 4 DOOR
#RH-1012-B \$99.95 EACH
- 1984 - 1996 2 DOOR
#RH-1012-2RC \$99.95 EACH



XJ FRONT SEAT HARNESS BAR

*SHIPS BARE STEEL - UNCOATED

- 1984 - 2001 2/4 DOOR
#RH-1012-C \$149.95

XJ REAR BENCH HARNESS BAR

*SHIPS BARE STEEL - UNCOATED

- 1984 - 2001 2/4 DOOR
#RH-1012-D \$149.95



XJ FRONT BUMPER

JEEP CHEROKEE XJ 2/4DR 1984 - 2001
 JEEP COMANCHE (1986 - 1992)



CHEROKEE + COMANCHE BUMPER FRONT BUMPER

#RH-1015 \$399.95
 *1984 - 1995 REQUIRES TRIMMING
 *SHOWN WITH OPTIONAL PARTS SOLD SEPARATELY

3/16" X 2" X 5" THICK STEEL
 1/4" THICK STEEL SIDE PLATES
 1" THICK RECOVERY TABS
 LASER CUT + CNC BENT
 LOW PROFILE + HIGH CLEARANCE
 POWDER COAT INCLUDED
 ALL HARDWARE INCLUDED
 OPTIONAL GRILLE GUARD
 OPTIONAL WINCH PLATE



TAPERED 1/4" THICK STEEL SIDE PLATES FOLLOW WHEEL WELL CURVE FOR HIGH CLEARANCE AND CLEAN LOOK

TIGHTLY HUGS FRONT GRILLE FOR MAXIMUM APPROACH ANGLE MAKING THIS ONE OF THE MOST OFF ROAD CAPABLE XJ FRONT BUMPERS ON THE MARKET!



INTEGRATED LOWER VALENCE BUILT FROM 3/16" THICK STEEL

EXCLUSIVE MOUNTING METHOD FOR EXTREME DUTY WINCHING

LOW PROFILE BUMPER FOLLOWS NATURAL XJ BODY LINES



XJ BUMPER UPGRADES

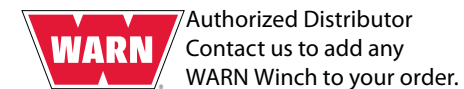
JEEP CHEROKEE XJ 2/4DR (1984 - 2001)



FITS MOST POPULAR WINCHES

BOLT ON FRONT BUMPER WINCH PLATE

ROCK HARD 4X4 FRONT BUMPER REQUIRED
 1984 - 2001 JEEP XJ
#RH-1015-A \$199.95



1-1/2" STEEL TUBING

BOLT ON FRONT BUMPER GRILLE GUARD

ROCK HARD 4X4 FRONT BUMPER REQUIRED
 1984 - 2001 JEEP XJ
#RH-1015-BG \$199.95



XJ SLIDERS

JEEP CHEROKEE XJ 2/4DR 1984 - 2001



ROCK SLIDERS / ROCKER GUARDS

CHEROKEE 2/4DR 1984 - 2001
#RH-1014 \$379.95

2" X 3" STEEL TUBING MOUNTS TO UNIBODY FOR EXTREME STRENGTH
 POWDER COAT INCLUDED - BOXED AND TAPERED ENDS FOR OVERSIZED TIRES
 STRONG ENOUGH TO LIFT ENTIRE CHEROKEE FROM SLIDER - SOME DRILLING REQUIRED



XJ REAR BUMPER

JEEP CHEROKEE XJ 2/4DR (1984 - 2001)

**3/16" X 2" X 4" STEEL TUBE WITH 1/4" THICK SIDE PLATES
 FITS UP TO 38" SPARE TIRE WITH FULLY ADJUSTABLE MOUNT
 POWDER COAT INCLUDED - 2" RECEIVER INCLUDED
 RATTLE FREE LATCH SYSTEM - ALL HARDWARE INCLUDED**



RH-1013-B SHOWN

REAR BUMPER MODELS

WITH TIRE CARRIER

#RH-1013 \$999.95

BUMPER ONLY

#RH-1013-A \$599.95

WITH TIRE CARRIER

BUSHWACKER FLARES

#RH-1013-B \$999.95

BUMPER ONLY

BUSHWACKER FLARES

#RH-1013-C \$599.95



RH-1013 FACTORY FLARE FITMENT



2" TOW RATED RECEIVER
 + SAFETY CHAIN HOOKS



ADJUSTABLE SPARE TIRE
 MOUNT FITS UP TO 38"



2 STAGE RATTLE FREE
 LATCH MECHANISM



INTEGRATED HI-LIFT JACK
 AND CB ANTENNA MOUNTS



DROP DOWN SAFETY PIN
 PREVENTS CLOSURE



HEAVY DUTY DOUBLE
 BEARING HUB SYSTEM



1" THICK STEEL DOUBLE
 WELDED RECOVERY TABS



PROTECTS REAR CORNER
 FROM TRAIL DAMAGE

XJ REAR BUMPER UPGRADES

JEEP CHEROKEE XJ 2/4DR (1984 - 2001)



TIRE CARRIER CARGO BASKET

#RH-2004 \$249.95

SUPPORTS UP TO 100 LBS!

100% BOLT ON INSTALL

ADJUSTABLE HEIGHT BASKET

POWDER COAT INCLUDED

FITS 2"X2" SQUARE TUBE 45° CARRIERS

GAIN NEARLY 5 SQ. FT. OF CARGO SPACE!

INSIDE DIMS: 5-1/4" X 18-1/4" X 38-1/2"

TIRE CARRIER TANK MOUNTS

LEFT DRIVER SIDE

#RH-2003-LT \$129.95 EA

FITS NATO, ROTOPAX AND CO2 TANKS

100% BOLT ON INSTALL

ADJUSTABLE HEIGHT

POWDER COAT INCLUDED

ADJUSTABLE STRAPS INCLUDED

CB ANTENNA TAB INCLUDED

*PASS SIDE NOT XJ COMPATIBLE



LICENSE PLATE MOUNT

LED PLATE AND 3RD

BRAKE LIGHT WITH

RELOCATION KIT

#RH-4006 \$99.95

LICENSE PLATE MOUNT

ONLY

#RH-4007 \$49.95

XJ FUEL TANK SKID PLATE

JEEP CHEROKEE XJ 2/4DR (1984 - 2001)



CHEROKEE FUEL TANK SKID

1984 - 2001 JEEP XJ

#RH-3009 \$299.95

HEAVY DUTY 3/16" STEEL

LASER CUT

CNC BENT FOR PRECISE FITMENT

POWDER COAT INCLUDED

A MUST HAVE!



ZJ SPORT CAGE

JEEP GRAND CHEROKEE ZJ (1993 - 1998)

**PREMIUM - PATENTED - PROVEN "THE ORIGINAL BOLT IN CAGE"
REQUIRES NO WELDING - PATENTED STEEL LOCKING COLLARS**

PROTECTS FROM WINDSHIELD TO CARGO AREA AND IS CONSTRUCTED FROM 1-3/4" X .120" STEEL TUBING. NO WELDING REQUIRED. POWDER COAT NOT INCLUDED. SOME FLOOR DRILLING REQUIRED. IF CARPET REMOVED PLEASE CALL PRIOR TO ORDERING.



GRAND CHEROKEE SPORT CAGE ZJ *SHIPS BARE STEEL - UNCOATED

1993 - 1998
#RH-1031 \$999.95

MAIN SPORT CAGE INCLUDES:
3 MAIN HOOPS
WINDSHIELD SIDE BARS
ACROSS DASH BAR
OUTER CONNECTING BARS
45 DEGREE FORWARD BARS
FLOOR MOUNTS
UNDERCARRIAGE MOUNTS
ALL HARDWARE



ZJ FRONT SEAT HARNESS BAR
*SHIPS BARE STEEL - UNCOATED
1993 - 1998
#RH-1031-A \$149.95

ZJ REAR SEAT HARNESS BAR
*SHIPS BARE STEEL - UNCOATED
1993 - 1998
#RH-1031-B \$149.95



WJ SPORT CAGE

JEEP GRAND CHEROKEE WJ (1999 - 2004)

**PREMIUM - PATENTED - PROVEN "THE ORIGINAL BOLT IN CAGE"
REQUIRES NO WELDING - PATENTED STEEL LOCKING COLLARS**

PROTECTS FROM WINDSHIELD TO CARGO AREA AND IS CONSTRUCTED FROM 1-3/4" X .120" STEEL TUBING. NO WELDING REQUIRED. POWDER COAT NOT INCLUDED. SOME FLOOR DRILLING REQUIRED. IF CARPET REMOVED PLEASE CALL PRIOR TO ORDERING.



GRAND CHEROKEE SPORT CAGE WJ *SHIPS BARE STEEL - UNCOATED

1999 - 2004
#RH-1033 \$999.95

MAIN SPORT CAGE INCLUDES:
3 MAIN HOOPS
WINDSHIELD SIDE BARS
ACROSS DASH BAR
OUTER CONNECTING BARS
45 DEGREE FORWARD BARS
FLOOR MOUNTS
UNDERCARRIAGE MOUNTS
ALL HARDWARE



WJ FRONT SEAT HARNESS BAR
*SHIPS BARE STEEL - UNCOATED
1999 - 2004
#RH-1033-A \$149.95

WJ REAR SEAT HARNESS BAR
*SHIPS BARE STEEL - UNCOATED
1999 - 2004
#RH-1033-B \$149.95



ZJ + WJ FRONT BUMPER

JEEP GRAND CHEROKEE ZJ (1993 - 1998)
 JEEP GRAND CHEROKEE WJ (1999 - 2004)



UNMATCHED OFF ROAD CLEARANCE



1/4" THICK STEEL PLATE CONSTRUCTION
 LASER CUT AND CNC BENT FOR PRECISE FIT
 1" THICK RECOVERY TABS INCLUDED
 ALL HARDWARE INCLUDED
 POWDER COAT INCLUDED
 HIGH CLEARANCE - EXTREME DUTY!



LASER CUT FOR ENHANCED AIRFLOW

GRAND CHEROKEE FRONT BUMPER MODELS

1993 - 1998 JEEP ZJ
 #RH-7002 \$599.95

1999 - 2004 JEEP WJ
 #RH-7052 \$599.95

FRONT BUMPER UPGRADES

POWDER COAT INCLUDED - REQUIRES RH4X4 FRONT BUMPER



FITS MOST POPULAR WINCHES

BOLT ON FRONT BUMPER WINCH PLATE

ROCK HARD 4X4 FRONT BUMPER REQUIRED

1993 - 1998 JEEP ZJ
 #RH-1015-A \$199.95
 1999 - 2004 JEEP WJ
 #RH-1015-A \$199.95



1-1/4" STEEL TUBING

BOLT ON FRONT BUMPER GRILLE GUARD

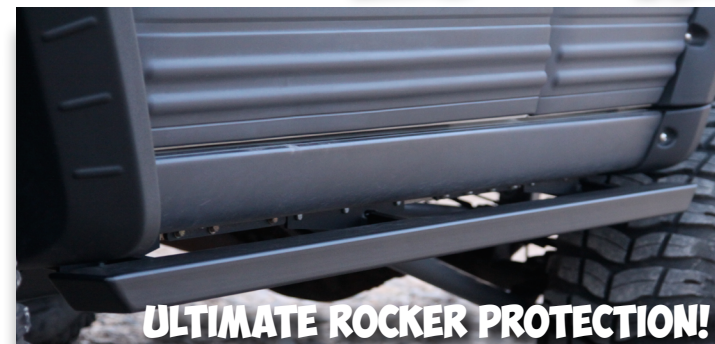
ROCK HARD 4X4 FRONT BUMPER REQUIRED

1993 - 1998 JEEP ZJ
 #RH-7002-B \$199.95



Authorized Distributor
 Contact us to add any
 WARN Winch to your order.

ZJ + WJ SLIDERS



ULTIMATE ROCKER PROTECTION!

GRAND CHEROKEE ROCK SLIDERS

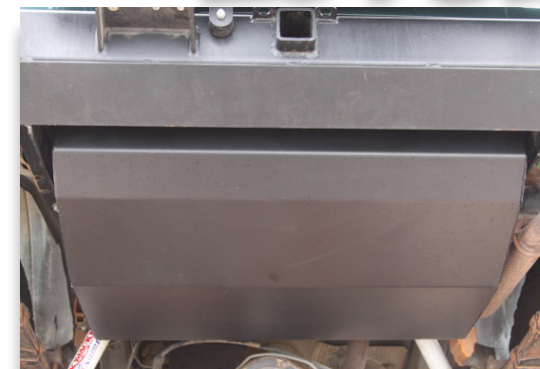
1993 - 1998 JEEP ZJ
 #RH-7003 \$379.95

1999 - 2004 JEEP WJ
 #RH-7053 \$379.95

HEAVY DUTY 2" X 3" STEEL TUBING
 POWDER COAT INCLUDED



ZJ FUEL TANK SKID



GRAND CHEROKEE FUEL TANK SKID

1993 - 1998 JEEP ZJ
 #RH-3010 \$299.95

HEAVY DUTY 3/16" STEEL
 LASER CUT + CNC BENT FOR PRECISE FITMENT
 POWDER COAT INCLUDED



ZJ + WJ REAR BUMPER + TIRE CARRIER

JEEP GRAND CHEROKEE ZJ (1993 - 1998)
 JEEP GRAND CHEROKEE WJ (1999 - 2004)
3/16" X 2" X 4" THICK STEEL CONSTRUCTION - 1/4" THICK ENDS
POWDER COAT INCLUDED - RECOVERY TABS INCLUDED
LASER CUT AND CNC BENT FOR PRECISE FITMENT
RATTLE FREE TIRE CARRIER FITS UP TO 38" SPARE



HIGH CLEARANCE - EXTREME DUTY!



ULTIMATE REAR CORNER PROTECTION!

GRAND CHEROKEE REAR BUMPER WITH TIRE CARRIER

1993 - 1998 JEEP ZJ

#RH-7000 \$999.95

1999 - 2004 JEEP WJ

#RH-7050 \$999.95

GRAND CHEROKEE REAR BUMPER NON-TIRE CARRIER

1993 - 1998 JEEP ZJ

#RH-7001 \$579.95

1999 - 2004 JEEP WJ

#RH-7051 \$579.95



INTEGRATED TOW RATED RECEIVER WITH SAFETY CHAIN HOOKS

DROP DOWN SAFETY PIN PREVENTS TIRE CARRIER FROM CLOSING ON YOU



HIGH CLEARANCE EXTREME DUTY 1/4" THICK CORNERS KEEP YOUR BODY SAFE



FULLY ADJUSTABLE TIRE CARRIER FITS UP TO 38" SPARE HI LIFT JACK MOUNT + CB ANTENNA TAB INCLUDED



REAR BUMPER UPGRADES

JEEP GRAND CHEROKEE ZJ (1993 - 1998)
 JEEP GRAND CHEROKEE WJ (1999 - 2004)



TIRE CARRIER ROCK RACK CARGO BASKET

#RH-2004 \$249.95

SUPPORTS UP TO 100 LBS!
 100% BOLT ON INSTALL
 ADJUSTABLE HEIGHT BASKET
 POWDER COAT INCLUDED
 FITS 2"X2" SQUARE TUBE 45° CARRIERS
 GAIN NEARLY 5 SQ. FT. OF CARGO SPACE!
 INSIDE DIMS: 5-1/4" X 18-1/4" X 38-1/2"



TIRE CARRIER TANK MOUNTS

LEFT DRIVER SIDE #RH-2003-LT \$129.95
 RIGHT PASSENGER SIDE #RH-2003-RT \$129.95
 FITS NATO, ROTOPAX AND CO2 TANKS
 CB ANTENNA MOUNT TABS INCLUDED
 100% BOLT ON INSTALL
 ADJUSTABLE HEIGHT
 POWDER COAT INCLUDED
 SECURE ADJUSTABLE STRAPS INCLUDED



3RD BRAKE LIGHT

#RH-2002-TL \$14.95

FITS 2-1/2" BORE HOLES
 MOUNTS TO TIRE CARRIER
 SOME WIRING REQUIRED
 CONNECTORS INCLUDED



LICENSE PLATE MOUNT

LED PLATE AND 3RD BRAKE LIGHT WITH RELOCATION KIT
 #RH-4006 \$99.95

LICENSE PLATE MOUNT ONLY

#RH-4007 \$49.95



FABRICATION COLLARS

PATENTED DESIGN

PROTECTED BY PATENT US6908107 AND USED IN ALL OUR CAGE SYSTEMS, OUR LOCKING COLLARS ARE THE FOUNDATION FOR OUR ULTIMATE SPORTS CAGE UPGRADE. MAGAZINE EDITORS, TRAIL GUIDES, WHEELERS FROM ACROSS THE WORLD, AND EVEN COMPETITORS HAVE TURNED TO OUR BOLT-IN CAGE FOR OVER A DECADE FOR THEIR OWN VEHICLES. THE STRENGTH OUR COLLARS PROVIDE IS INHERENT IN HOW THEY COUPLE OUR CAGE COMPONENTS TOGETHER.

OUR PATENT NOT ONLY PROTECTS RH4X4 FROM DOMESTIC AND OVERSEAS "KNOCK-OFFS" BUT ALSO GIVES YOU THE PEACE OF MIND KNOWING WE STAND 100% BEHIND OUR PRODUCT. OUR REGISTRATION GIVES YOU THE EXACT DEFINITION AND PURPOSE FOR OUR CAGE COMPONENTS. WE ENCOURAGE YOU TO READ OUR PATENT REGISTRATION AND SEE JUST HOW MUCH THOUGHT, TIME, AND CARE WAS PUT INTO OUR SYSTEM. WHY HAS NO OTHER MANUFACTURER PATENTED THEIR CAGE SYSTEM? EITHER ITS A COPY OF ANOTHER SYSTEM, OR THEY SIMPLY DON'T FEEL CONFIDENT ENOUGH IN THEIR DEVELOPMENT.

DON'T PURCHASE A COMPONENT THAT WAS SIMPLY MEANT TO COMPETE IN A MARKET, PURCHASE A PRODUCT THAT WAS BORN TO CREATE A MARKET!



PATENTED LOCKING COLLAR - FABRICATION READY:

*SHIPS BARE STEEL - UNCOATED

INSIDE

DIAMETER	PART #	PRICE EA.
1.50"	#RH-1150	\$36.95
1.75"	#RH-1175	\$36.95
2"	#RH-1200	\$36.95
2.25"	#RH-1225	\$36.95
3"	#RH-1300	\$39.95



EACH FABRICATION COLLAR COMES WITH MATCHING CAP AND HARDWARE.

AR-500 SHOOTING TARGETS

AR-500 TARGETS

5" PADS - HIGH CALIBER

.223 TO .308

#RH-AR-500-L \$59.95

3.5" PADS - MEDIUM CALIBER

9MM TO .308

#RH-AR-500-M \$49.95

2.5" PADS - SMALL CALIBER

.22 TO 9MM

#RH-AR-500-S \$29.95



ROCK HARD 4X4 ISN'T JUST JEEP UPGRADE PARTS, IT'S ALSO LIFESTYLE! OUR AR-500 STEEL TARGETS, LIKE ALL RH4X4 PRODUCTS, ARE 100% MADE IN USA AND MADE IN HOUSE. OUR FLIPPIN' TARGETS ARE DESIGNED TO ALWAYS LAND UP AND READY TO TAKE THE NEXT ROUND. THREE SIZES ARE AVAILABLE FOR ALL CALIBERS AND SKILL LEVELS.

HAPPY HUNTING!

POWDER COAT INCLUDED
TARGET PAPER INCLUDED
SHIPS FULLY WELDED





**ROCK HARD 4X4
PO BOX 186
ST. PAUL, NE 68873**

**ORDER + TECH LINE: (844) ROCK-HARD / (844) 762-7427
FAX: 308-754-5201**

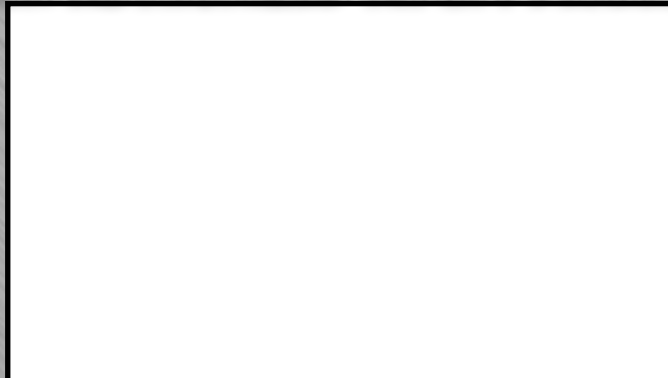
EMAIL: SALES@ROCKHARD4X4.COM



**FACEBOOK: ROCKHARD4X4
INSTAGRAM: @ROCKHARD4X4
TWITTER: @ROCKHARD4X4
YOUTUBE: ROCKHARD4X4
#ROCKHARD4X4**



YOUR AUTHORIZED RH4X4 DEALER IS:



ALL ROCK HARD 4X4 PARTS ARE PROUDLY MADE IN THE USA!