



**ROCK HARD 4X4 JEEP WRANGLER JK 2/4-DOOR
2007-CURRENT OIL PAN, TRANSMISSION, CAT SKID PLATE
PART #: RH-6000-LA and RH-6003
Installation Manual**



Customer Service / Tech Support: sales@rockhard4x4.com
Thank you for your purchase! Please read all instructions carefully prior to
beginning installation of your Rock Hard 4x4 product.

PACKING LIST:

- 1 - SKID PLATE**
- 1 - RIGHT SIDE FRONT STRAP
BRACE**
- 1 - LEFT SIDE FRONT STRAP
BRACE**
- 1 - SHIM**
- 4 - ½" X 1 ¼" STD BOLTS**
- 4 - ½" STD NYLOCK NUTS**
- 3 - 12MM X 1.5 X 35MM BOLTS**
- 1 - 12MM X 1.5 X 90MM BOLTS**
- 1 - 12MM X 1.5 NUT**
- 1 - ½" HARDENED FLAT
WASHER**
- 1 - ½" LOCK WASHER**
- 4 - ½" TAPERED WASHERS**
- 2 - 3/8" X 1" BUTTON HEAD
BOLTS**
- 2 - 3/8" NYLOCK NUTS**
- 1 - 3/8" BUTTON HEAD,**
- 1 - 3/8" LOCK WASHER**
- 1 - 3/8" STD WASHER**

Customer Service / Tech Support: sales@rockhard4x4.com

Thank you for your purchase! Please read all instructions carefully prior to beginning installation of your Rock Hard 4x4 product.

Thank you for your purchase! Whether you bought this Rock Hard 4x4 product from one of our fantastic dealers or our factory direct team, we thank you for your business.

Rock Hard 4x4 is a family owned and operated business. We are headquartered in Saint Paul, Nebraska where we design, fabricate, and produce every single one of our products. Every single part we manufacture is 100% Made in the USA and exclusively in house by the Rock Hard 4x4 team.

We outsource zero processes.

To you, that means the product you are installing is the highest quality and longest lasting component on the market.

To us, that means you've selected a part we've spent years developing. Each Rock Hard 4x4 part has gone through more research and development and evolution than most people realize. While our parts may have the same striking look year after year, subtle revisions and refinements we implement maintain their status as the most durable and easy to install on the market.

We invite you to send us your feedback! Please email, call, write, or catch us on an off road trail near you to share your tales, share comments, and ask questions.

Phone: 308-750-4690

Fax: 308-754-5201

Email: sales@rockhard4x4.com

Site: www.rockhard4x4.com

Mail: ROCK HARD 4X4

1005 Twin Forks Lane

Saint Paul, NE 68873

Customer Service / Tech Support: sales@rockhard4x4.com

Thank you for your purchase! Please read all instructions carefully prior to beginning installation of your Rock Hard 4x4 product.

1. If your vehicle is quipped with a front cross member, remove at this time.
2. Remove factory transfer case skid plate.
3. Remove two rear bolts at transmission mount cross member.

PRO TIP: If you have purchased a Rock Hard 4x4 Transfer Case skid plate, install it between oil pan skid plate and cross member. Install Oil Pan skid plate using three 12mm x 35mm bolts with large tapered washers into factory threaded cross member holes. Use one 12mm x 90mm bolt with large tapered washer and hardened washers, lock washer, and nut in passenger side hole.

See picture 2A



4. Install passenger side mounting bracket (bend in each end.) Use two ½" x 1 ¼" bolts and two ½" nylock nuts. Upper bolts use front slotted hole in frame just below motor mount.

PRO TIP: On 2012 put bracket on outside of skid plate.

See picture 3A

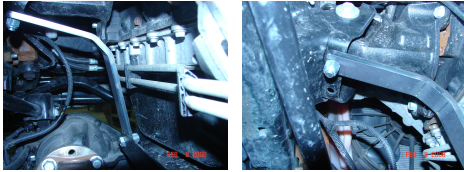


Customer Service / Tech Support: sales@rockhard4x4.com

Thank you for your purchase! Please read all instructions carefully prior to beginning installation of your Rock Hard 4x4 product.

5. Install driver side bracket (bends in center). Use two ½" x 1 ¼" bolts and nylock nuts. Short leg of bracket mounts to top and uses rear slotted hole in frame below motor mount. Tighten all four bracket bolts.

*PRO TIP: On 2012 put bracket on outside of skid plate.
See picture 4A and 4B*



6. Tighten rear cross member bolts.
7. Install catalytic converter skid plate using 3/8" x 1" button head bolts and 3/8" nylock nuts. Use one of the factory bolts in catalytic converter slotted hole to frame.
See picture 5A



CONGRATULATIONS! Now go wheel your rig with a whole new level of confidence and capability.

Please send photos of your install and wheeling adventures to pics@rockhard4x4.com. We love seeing our products on the trail!

Customer Service / Tech Support: sales@rockhard4x4.com
Thank you for your purchase! Please read all instructions carefully prior to beginning installation of your Rock Hard 4x4 product.

Rock Hard 4x4 Exclusive Limited Lifetime Warranty

Your Rock Hard 4x4® branded accessories are covered by the following Limited Warranty provided exclusively by Rock Hard 4x4., 1005 Twin Forks Lane, St. Paul, NE 68873.

This Limited Warranty is the only warranty made in connection with your purchase. Rock Hard 4x4 neither assumes nor authorizes any vendor, retailer or other person or entity to assume for it any other obligation or liability in connection with this product or Limited Warranty.

What is Covered: Subject to the terms, exclusions and limitations herein and with respect only to Rock Hard 4x4 branded accessories first sold in the United States, Rock Hard 4x4 warrants to the initial retail purchaser only that your Rock Hard 4x4 accessory shall be free of defects in material and workmanship for the lifetime of this product.

Rock Hard 4x4 reserves the rights to: (a.) require invoice or other proof your accessory is within the terms of this Limited Warranty as a condition of warranty service and, (b.) make future revisions to this product and Limited Warranty without prior notice or obligation to upgrade your product.

What is Not Covered: *Your Rock Hard 4x4 Limited Warranty does not cover products or parts Rock Hard 4x4 determines to have been damaged by or subjected to: (a.) Installation damage, alteration, modification, combination with other parts, failure to maintain or improper repair or service, (b.) normal wear & tear, cosmetic damage or damage from moisture or water immersion, (c.) Acts of God, accidents, misuse, negligence, inadequate mounting or impact with vehicle(s), obstacles or other aspects of the environment, (d.) theft, vandalism or other intentional damage. (e.) powder coat, anodizing, or paint finish.*

Remedy Limited to Repair/Replacement: *The exclusive remedy provided hereunder shall, upon Rock Hard 4x4 inspection and at Rock Hard 4x4's option, be either repair or replacement of product or parts (new or refurbished) covered under this Limited Warranty. Customers requesting warranty consideration should first contact Rock Hard 4x4 to obtain a RGA number (308-750-4690). All labor, removal, shipping and installation costs are customer's responsibility.*

Your Rights Under State Law: *In consideration of the purchase price paid, neither Rock Hard 4x4 nor any independent Rock Hard 4x4 distributor/licensee are responsible for any time loss, rental costs, or for any incidental, consequential, punitive or other damages you may have or incur in connection with any part or product purchased.*

Customer Service / Tech Support: sales@rockhard4x4.com

Thank you for your purchase! Please read all instructions carefully prior to beginning installation of your Rock Hard 4x4 product.